



## DEPARTMENT 11 - YOUTH DEPARTMENT

### 4-H AND AGRICULTURAL EDUCATION EXHIBITS

HORSES - WAYNE WOODARD, SARAH SHUE

DAIRY & BEEF CATTLE - BRUCE ROHR, SARAH SHUE

LIVESTOCK & SMALL ANIMAL BUILDING - SARAH SHUE, EYV  
BERNAT

YOUTH BUILDING - PENNY ROWSAM

Minimum Premiums - \$2,000.00

#### GENERAL RULES

1. ENTRY REQUIREMENTS - Entries will only be accepted from currently and appropriately enrolled 4-H members, and from members of an FFA chapter in the county who have been regularly enrolled during the previous school year in the Agriculture department of the school they represent. Each member must be in good standing in the local, sub-district, state and national FFA Association.
2. No entry fee is required in this department but all entries must be correctly labeled.
3. Exhibits must be grown, made, or prepared by the exhibitor during the current project year. All animals must be owned by the exhibitor by **June 1st of current year**. (A non-owned animal may be shown if the exhibitor designates the animal as a project animal and starts care for the animal by **June 1st**.)
4. Only one non-owned animal may be shown per species by an exhibitor and only if they do not already own one of designated species, except in the case of oxen, llamas and alpacas where the limit is two. An approved certificate of non-ownership must be on file at the Lewis County Cooperative Extension 4-H Office by **June 1st**.
5. No 4-H member may enter more than two entries in animal classes, and one entry per other classes except where specified.
6. The Lewis County Agricultural society assumes no responsibility for lost or damaged exhibits.
7. State Fair 4-H exhibitors must be nine years of age by September 30<sup>th</sup>, 2009, and have not reached their nineteenth birthday prior to January 1, 2010. Inquire at the Cooperative Extension, 4-H office as to which exhibits are eligible for state fair.
8. **All animal entries are due at the 4-H Office June 25th.** Entry sheets are available at the Cooperative Extension, 4-H Office and on the CCE Web Site ([www.counties.cce.cornell.edu/lewis](http://www.counties.cce.cornell.edu/lewis))
9. All exhibitors are urged to be present when entries are judged.
10. Judging of entries (sections 35-50) in the Youth Building will take place Monday, July 19th from 1PM - 6PM. All exhibits must be entered and judged by 6 pm.
11. All Exhibits must be in place by the following dates & times:
12. Monday, 7/19/10 -6:00 PM - Youth Building
13. Monday, 7/19/10 -9:00 PM - Livestock (cattle, sheep, swine, goats, horses, llama, alpaca, rabbits, poultry and cavies).
14. All entries must be left on display until 8:00 pm Saturday, July 24th.
15. Cloverbuds may only participate in Cloverbud Show & Tell.
16. 4-H'ers, age 8 -13 (Jan.1, this year) will exhibit in Jr. Division classes.  
4-H'ers, age 14 -18 (Jan.1, this year) will exhibit in Sr. division classes. 4-H'ers, Kindergarten thru second grade will exhibit as "Cloverbuds" (Guidelines available from Cooperative Extension, 4-H office).

#### AWARDS

- Judging in all departments will be done on "the Danish System". All exhibits of truly outstanding quality will be placed in the excellent group, followed by Good and Worthy. Cash prizes for all excellent and good exhibits and for worthy exhibits where indicated. All awards will be made according to a point system - see each department for the assigned value.

- Cloverbud recognition will be a special cloverbud ribbon and prizes to include ice cream certificates for the Dairy Princess Booth.

### Section 1 - 4-H & FFA HORSE SHOW

Tuesday, July 20<sup>th</sup> at 9:00 AM

Wednesday, July 21<sup>st</sup> at 9:00 AM

AWARDS: Excellent-12 units; Good-10 units; Worthy - 8 units

#### RULES:

1. The use of an approved **HELMET** and proper equestrian **FOOTWEAR** (with a distinguishable heel) are required at all times that a rider is mounted on an equine, sitting in a cart or handling an equine in a riding arena at a 4-H sponsored clinic or show including warm up and non show times.
2. All exhibitors must be currently enrolled as a Lewis County 4-H member or a FFA member in Lewis County. All 4-H horses must have a 4-H Horse Identification Certificate on record at the 4-H office as of June 1<sup>st</sup> of the current year.
3. Each 4-H youth (including cloverbuds) must be evaluated in the Level Riding Program and the form must be on file in the 4-H Office. Youth must only ride in their level classes.
4. 4-H'ers must have an Acknowledgement of Risk Form on file at the 4-H Office.
5. Entries for the Youth Show are due **by June 25th by 4:30 pm** at the 4-H Office.
6. 4-H rules apply throughout the entire 4-H show; copies are available at the 4-H office.
7. 4-H'ers, age 8-13 (Jan. 1 this year) will exhibit in Jr. Division Classes. 4-H'ers, age 14-18 (Jan. 1 this year) will exhibit in Sr. Division Classes. 4-H'ers, age kindergarten through second grade will exhibit as Cloverbuds. (See Cloverbud Rules on next page)
8. Exhibitors are responsible for the humane treatment and well being for any equine in their care. They are to be treated humanely and with dignity and respect. Showing competitively is of secondary importance. Equines must be serviceable, and sound; however, cuts or rope burns will not be penalized.
9. State health requirements must be met, obviously sick animals will be sent home.
10. Entries in western classes must be dressed in western **style clothing** and entries in English must be dressed in English style **clothing**.
11. No intact stallion or jack over 12 months of age may be present at a 4-H event, show, clinic, etc.
12. Walk/Trot exhibitors can show in Walk /Trot, Fitting and Showmanship, and Costume Class.
13. **Halter Classes - NOT appropriate for the cloverbuds in the 4-H horse program. (This includes showmanship and halter classes)**
14. Riders may only enter Stock Seat Equitation, or Stock Seat Horsemanship.
15. Novice Classes are limited to those 4-H members who have never won a 1<sup>st</sup> blue in respective classes to date.
16. Exhibitors with ponies may choose to ride in either pony classes, or their regular riding level class, even if pony classes are available.
17. Classes with less than 3 entries may be combined with equivalent class or be canceled.
18. Points will be accumulated for State Fair according to Division. The final decision rests with the 4-H office.
19. 4-H'ers are allowed to ride a 2-year-old horse, but they cannot qualify for State Fair.
20. All exhibitors will participate at their own risk.
21. Equipment must be neat and serviceable. Martingales and tie downs allowed in games only. No wire or metal devices in connection with chin straps. One half-inch flat curb chain allowed. No whips allowed, except in English classes. A Hackamore is defined as a rawhide braided, leather braided, or rope bosal with headstall. Horses, 5 years and under may be ridden in any class with a bosal, but they are not eligible for state fair, except in the bosal class.

22. Entries for the Premium Show (Friday) and for the Open Show (Saturday) must be to the fair office by 9 pm Wednesday, July 9<sup>th</sup>. There will be NO exceptions!

**AVAILABLE EQUINE FAIR AWARDS:**

- Previous award winners may enter in succeeding years, but may not be eligible to win the award a second time.
- The Uncle Walt Kohler Memorial - Jr. Stockseat Equitation award, given by Sunwood Stables, is awarded to the Jr. Horseman.
- The Holly Sullivan Memorial - Walk/Trot Equitation award is awarded to the walk/trot horseman, given by the Lee family (Sunwood Stables).

**SPECIAL RULES FOR EQUINE CLOVERBUDS ONLY:**

1. Safety is always a concern for any program that involves youth. It is of particular concern when working with 4-H Cloverbuds (youth in kindergarten, first and second grades).
2. **The use of an approved HELMET and proper equestrian FOOTWEAR (with a distinguishable heel) are required at all times that a rider is mounted on an equine, sitting in a cart or handling an equine in a riding arena at a 4-H sponsored clinic or show including warm up and non show times.**
3. The horse/pony should be of appropriate size, disposition and level of training for the ability of the level of the child.
4. A 1:1 adult to youth ration is recommended when cloverbuds work with a large animal.
5. Cloverbuds may ride in lead line walk, lead line walk/trot, or walk/trot.
6. Cloverbuds MUST be evaluated and demonstrate the "on ground skills" necessary to work safely with equines and show respect to the equine.
7. Competent supervision, in a controlled environment, should be easily assessable to the child at all times when they are mounted.
8. **Lead Line** is generally appropriate for the kindergarten and first grade child (five and six year olds or developmentally equivalent). Handler of horse must be an adult.
9. **Walk/Trot or Walk Jog** – this level would be generally be appropriate for the second and third grade child (seven and eight year olds or developmentally equivalent.)
10. Cloverbud classes will be "exhibition only", the youth will NOT be ranked or judged. Each cloverbud will received a cloverbud participation ribbon as well as an ice cream certificate to redeem at the Dairy Princess Building.
11. As with any 4-H'er, all cloverbuds should be praised highly.
12. The riding activity involving 4-H cloverbuds shall be done in a "controlled environment in a "contained riding area".
13. No other riders, except cloverbud riders should be in the ring when cloverbuds are riding.
14. Not more than 10 cloverbuds should be in the ring at one time. Larger classes shall be split.
15. **At least 4 (four) knowledgeable adult "Spotters" must be strategically placed on the corners with easy access to the youth.**

**TUESDAY (ALL DAY) - ENGLISH**

**Class Number:**

1. Sr. Fitting and Showmanship\*
2. Jr. Fitting and Showmanship\*
3. Yearling and Weanling @Halter
4. Cloverbud Lead Line Walk
5. Cloverbud Lead Line Walk/ Trot
6. Clover bud Walk/ Trot
7. Sr. English Equitation On The Flat\*
8. Jr. English Equitation On The Flat\*
9. Pony English Equitation On The Flat\*
10. Novice English Equitation On The Flat
11. Sr. English Pleasure\*
12. Jr. English Pleasure\*

13. Pony English Pleasure\*
14. Novice English Pleasure
15. Sr. Hunter Hack
16. Jr. Hunter Hack

**...LUNCH BREAK...**

17. Jumping In Hand (mini, or donkey)
18. Trail In Hand (mini, or donkey)
19. Sr. Command
20. Jr. Command
21. Sr. Hunter Under Saddle\*
22. Jr. Hunter Under Saddle\*
23. Novice Hunter Under Saddle
24. Sr. Water In a Cup
25. Jr. Water In a Cup
26. Driving Pleasure\*
27. Driving Reinsmanship\*
28. Drive In Ride Out\*
29. English Pony Trail
30. English Sr. Trail
31. English Jr. Trail

\*\*\* Judging to follow the show, however will start no earlier than 4 pm.\*\*\*

**WEDNESDAY (ALL DAY) WESTERN/GYMKHANA**

**Class Number:**

32. Sr. Fitting and Showmanship\*
33. Jr. Fitting and Showmanship\*
34. Walk Trot Fitting and Showmanship (Western or English)
35. Mare and Foal Class
36. Walk/Trot Equitation (Western or English)
37. Sr. Stock Seat Equitation\*
38. Sr. Stock Seat Horsemanship (Pattern)\*
39. Jr. Stock Seat Equitation\*
40. Jr. Stock Seat Horsemanship (Pattern)\*
41. Pony Stock Seat Equitation\*
42. Pony Stock Seat Horsemanship (Pattern) \*
43. Walk/ Trot Pleasure (Western or English)
44. Sr. Road Hack\*
45. Jr. Road Hack\*
46. Pony Road Hack\*
47. Novice Equitation- Sr. Rider
48. Novice Equitation- Jr. Rider
49. Walk/Trot Command (Western or English)

**... LUNCH BREAK ...**

50. Costume Class (funniest, prettiest, most original)
51. Sr. Western Trail\*
52. Jr. Western Trail\*
53. Walk/Trot Trail Western or English
54. Western Riding\*
55. Reining\*
56. Sr. Western Pleasure\*
57. Jr. Western Pleasure\*
58. Pony Pleasure\*
59. Sr. Novice Pleasure
60. Jr. Novice Pleasure
61. Sr. Golf Ball Pleasure
62. Jr. Golf Ball Pleasure
63. Sr. Stake in a Barrel\*
64. Jr Stake in a Barrel\*
65. Sr. Straight Line Barrels\*
66. Jr. Straight Line Barrels\*
67. Sr. Texas T\*

- 68. Jr. Texas T\*
- 69. Sr. Quadrangle Barrels\*
- 70. Jr. Quadrangle Barrels\*
- 71. Sr. Cloverleaf Barrels\*
- 72. Jr. Cloverleaf Barrels\*
- 73. Sr. Pole Bending\*
- 74. Jr. Pole Bending\*
- 75. Sr. Keyhole Race\*
- 76. Jr. Keyhole Race\*

\* - These classes are qualifying classes for the NYS Fair

## SECTION 2 – HORSE CONTESTS

**Tuesday, July 20<sup>th</sup>**

**Immediately following show, but will start no earlier than 4 PM**

**AWARDS: Excellent 8 units, Good 4 units**

### Class Numbers:

1. **4-H & FFA JUDGING CONTEST:** Contestants will judge classes of light saddle horses, draft and/or ponies, plus selected performance classes. Questions and/or oral reasons will be given for one or more classes.

An appropriate award will be given to the contestant having the highest judging score in addition to the premium.

Teams, based on top scores, will be selected to represent Lewis County at State Fair.

## THREE DIMENSIONAL HORSE EXHIBIT

**AWARDS: Excellent 12 units, Good 10 units of money.**

### Class Numbers:

#### 2. Three Dimensional Horse Exhibit

- Space will be provided for these exhibits in the **Horse Barn**.
- **To receive your premium you must fill out an entry card.**
- **The intent of this class is to have youth demonstrate horse knowledge to the fair going public. Topics are to be horse science project based and focus on giving information about horses and horse management to the public.**
- The exhibit may be illustrated with the use of actual tack, tools and supplies or models, posters or photos.
- Posters should be large enough to be seen easily at a distance.
- Photos should be mounted and large enough to be seen easily.
- Exhibit should be self- explanatory through appropriate use of signs and labels.
- If exhibit is to be displayed on a tabletop exhibitor must supply own table.
- The exhibit will be evaluated on: principle idea, effectiveness in illustrating the topic, appearance and arrangement, and accuracy of information.
- Topics may include breeds of horses, colors of horses, hoof care, parasites, how to groom a horse, feed identification, etc.

## 4-H AND FFA DAIRY CATTLE

### RULES:

- Competition is open to enrolled (by June 1st) 4-H and FFA members from Lewis County.
- All animals must meet the requirements of the Cattle Department (see Dept. 02).
- All exhibits must be clean and in order for the public by 8:30 a.m. daily or they will not be allowed to participate in dairy cattle shows.
- **All cattle exhibited must have been cared for and owned by the exhibitor since June 1<sup>st</sup> of this year. All purebred animals must be registered in a single member's name only.**
- Non-ownership animals must be cared for by exhibitor by June 1st and non-ownership form must be on file at 4-H office by June 1st.
- In case of an animal entry registered or transferred to the exhibitor and the registration paper has not been received, a statement from the secretary of the BREED Association will be **NECESSARY** for acceptance of entry (**Applies to 4-H only**).
- **No feed or bedding will be furnished by the fair association.**
- **All 4-H dairy cattle and beef must be entered in the 4-H office by June 25th.**
- 4-H and FFA members must be present at the time of judging. Each member is expected to be responsible for the showing of his/her own animal. Exceptions can be made under such circumstances or conditions as the 4-H program staff and/or Cattle Superintendent may determine necessary.
- **Open** classes will be accepted until 9:00 pm on Friday, July 14th. (Mail entries by July 8th.)
- Exhibitors must have registration papers in possession until after show day.
- Two (2) animals per class per exhibitor - maximum. Non-ownership limited to one (1) animal.
- **Reminder: Entries can be also made in Section 11, Classes 1-3**



## Section 3 - DAIRY CATTLE SHOWMANSHIP

### Note: Changes for 2010

**Tuesday, July 20<sup>th</sup>**  
**Clipping Contest at 10:00 am**  
**Showmanship at 1:30 pm**

**AWARDS: Exhibitors will be judged on a group basis.**  
**Excellent: 12 units, Good 10 units, and Worthy 8 units of money.**

1. Senior Showmanship Contest for exhibitors 14-18 years of age or over as of show day.
2. Junior Showmanship Contest for exhibitors 8 -13 years of age as of show day.
3. Novice Showmanship for first year members only, regardless of age.
4. Cloverbud, Show & Tell - Guidelines available from Cooperative Extension, 4-H Office. For youth in at least kindergarten thru second grade.
5. In case of an animal entry registered or transferred to the exhibitor and the registration paper has not received, a statement from the secretary of the BREED Association will be NECESSARY for acceptance of entry. (Applies to 4-H)

Rules for the new showmanship contest are as follows:

- To be eligible for the master showman award youth of senior and junior ages must participate in the clipping contest.
- Senior and Junior showman must have the head of the animal clipped
- If a novice showman chooses to compete they must have head and legs of the animal clipped.
- Anyone who chooses not to compete is strongly encouraged to watch.
- Animal must be washed and dried prior to clipping.
- Each participant must have their own set of clippers or have access to a set of clippers. (THERE WILL BE NO SHARING OF CLIPPERS)
- Dairy animals will be clipped in the show ring. Each contestant will have a maximum of 2 hours.
- Milking females do not need to be "bagged" for competition. Extra credit will not be given for those who are.
- No bulls.
- The judge may ask questions about breed(s), showing and fitting, and general dairy industry.
- Decisions of the judges and contest chairperson are final.
- Parents are to adhere to the showing code ethics and to practice good sportsmanship at all times. Those who behave inappropriately will be asked to leave the show ring.
- Cloverbud Recognition-Cloverbud ribbon & ice cream certificate for Dairy Princess booth.
- Each contestant must show his/her own animal, but during the course of the contest may be asked by the judge to show some other animal.

The judge will be assigning points based on the following:

#### CLIPPING SCORECARD

Comfortable with clippers, brushes, and blowers.....	10
Hair is uniform in length and appearance.....	10
Sides are well blended into top line.....	10
Top line is straight.....	10
Clipping of heifer is complete.....	<u>10</u>
<b>TOTAL.....</b>	<b>50 pts</b>

## Wednesday, July 21<sup>st</sup>

### Dairy Breed Classes at 10:00am

- Section 4 – HOLSTEIN - CLASSES 1-20**
- Section 5 – GUERNSEY – CLASSES 1 -20**
- Section 6 – JERSEY - CLASSES 1-20**
- Section 7 – AYRSHIRE - CLASSES 1-20**
- Section 8 – BROWN SWISS - CLASSES 1-20**
- Section 9 – MILKING SHORTHORN-CLASSES 1-20**

**AWARDS - All animals in Section 4 - 9:**

**Excellent: 20 units; Good: 17 units; Worthy; 14 units of money.**

**Class Numbers:**

1. Junior Heifer Calf born on or after March 1, 2010 and at least 3 months of age at show time.
2. Intermediate Heifer Calf Born Dec. 1, 2009 - Feb 28, 2010
3. Senior Heifer Calf Born Sept. 1 - Nov. 30, 2009
4. Summer Yearling Born June 1 - Aug. 31, 2009
5. Junior Yearling (not in milk) born March 1 - May 31, 2009
6. Intermediate Senior Yearling (not in milk) Dec. 1, 2008 - Feb. 29, 2009
7. Senior yearling Heifer (not in milk) born Sept. 1 – November 30, 2008
8. JUNIOR CHAMPION - UNDER 2 YEARS -(Ribbon)
9. Heifer, 2 years, Jr. born March 1 - August 31, 2008
10. Heifer, 2 years, Sr. born Sept. 1 2007 - Feb. 28, 2008
11. Heifer, 3 years born Sept. 1, 2006 - Aug. 31, 2007
12. Cow, 4 years born Sept. 1, 2005 - Aug. 31, 2006
13. Cow, 5 years and under 6, born Sept. 1, 2004 - Aug. 31, 2005
14. Aged Cow, 6 years and over
15. Dry Cow, 4 years and under 5 years. Cows shown in this class may not be shown in milking class (Dry cows not shown in this class may show in milking class)
16. Dry Cow, 5 years and over. Cows shown in this class may not show in milking class. (Dry cows not shown in this class may show in milking class.)
17. SENIOR CHAMPION OVER 2 YEARS - (Ribbon)
18. GRAND CHAMPION FEMALE - (Ribbon)  
Award donated by Lowville Producers Co-op to 4-H member exhibiting the Grand Champion Holstein.
19. Dam-Daughter
20. Exhibitor Herd -  
(3 females owned by exhibitor-at least 3 months old at time of show.)

### SECTION 10 – BETTER BRED CLASSES (for unregistered calves)

**Entries in these classes must be sired by favorable proven sires or by artificial insemination. Proof must be available upon request. Animals will be judged to the standard of the breed.**

**Class Number:**

1. Jr. Heifer Calf - born after March 1, this year, at least 3 months of age as of show time
2. Sr. Heifer Calf - born September 1, 2009 - February 28, 2010
3. Jr. Yearling Heifer - born March 1 - August 31, 2009
4. Sr. Yearling Heifer (Not in Milk) - September 1, 2008 - February 28, 2009
5. Best of Show (Ribbon)

**Reminder: Entries can be also made in Section 11, Classes 1-3**

### SECTION 11 – MISCELLANEOUS DAIRY CLASSES

**CLASS #1 - DAIRY JUDGING CONTEST - Thursday, July 22 - 9:00 am**

This contest is open to any regularly enrolled 4-H & FFA member regardless of whether or not they are exhibitors. Ribbons are based on the Danish system. Premiums to the winners: 1st place - 10 units, 2nd place- 8 units, 3rd place - 6 units, 4th place - 4 units.

**CLASS #3 – DAIRY COSTUME CLASS - Wednesday, July 21st**  
(following breed classes) **AWARDS: Excellent 12 units, Good 10 units,**  
and **Worthy 8 units**

## 4H AND FFA LIVESTOCK SHOW

**Thursday, July 22<sup>nd</sup> – 2:00pm**

Breed cards will be available for display with animal at the “fair office” on Monday of fair week.

### SECTION 12 – BEEF CATTLE

#### RULES:

- Animals to be shown in breeding or market classes--**NOT BOTH**
- **Cloverbud activities** must be closely supervised. Feeding, watering, and some grooming are appropriate for this age because they involve measuring, physical activity and stimulate immediate positive responses from the animal that members can enjoy and remember. Sole responsibility for cattle ownership, training, grooming, milking, and showing is inappropriate for cloverbuds. A cloverbud may share the responsibility for raising calves.
- Competition open to enrolled (by June 1st) 4-H and FFA. Members from Lewis County.
- All animals must meet the requirements of the Cattle Department (see Dept. 02)
- All exhibits must be clean and in order for the public by 8:30 a.m. daily or they will not be allowed to participate in cattle shows.
- All cattle exhibited must have been cared for and owned by the exhibitor since June 1<sup>st</sup> of this year. All purebred animals must be registered in a single member's name only.
- Non-ownership animals must be cared for by exhibitor by June 1st and non-ownership form must be on file at 4-H office by June 1<sup>st</sup>.
- In case of an animal entry registered or transferred to the exhibitor and the registration paper has not been received, a statement from the secretary of the BREED Association will be NECESSARY for acceptance of entry (**Applies to 4-H only**).
- No feed or bedding will be furnished by the fair association.
- **All 4-H dairy cattle and beef must be entered in the 4-H office by June 25th**
- 4-H and FFA members must be present at the time of judging. Each member is expected to be responsible for the showing of his/her own animal. Exceptions can be made under such circumstances or conditions as the 4-H program staff and/or Cattle Superintendent may determine necessary.
- **Open classes will be accepted until 9:00 pm on Wednesday, July 9th. (Mail entries by July 5<sup>th</sup>.)**
- Exhibitors must have registration papers in possession until after show day.
- Two (2) animals per class per exhibitor - maximum. Non-ownership limited to one (1) animal.

#### Fitting and Showmanship

**AWARDS: Excellent 12 units, Good 10 units, Worthy 8 units**

#### Class Number:

1. Sr. Fitting & Showmanship (14 yrs-18)
2. Jr. Fitting & Showmanship (8-13 yrs)
3. Novice Fitting & Showmanship (2 yrs. or less showing)
4. Showmanship Award will be for Grand Champion Showman
5. Cloverbud, Show & Tell (Fitting & Showmanship)

#### Beef Breeding Classes: (Must be owned by June 1st)

**AWARDS: Excellent 20 units, Good 17 units, Worthy 14 units of money**

#### Class Number:

6. Jr. Heifer, Jan.1 - May 1, current yr.
7. Sr. Heifer, Sept. 1 - Dec. 31, preceding yr.
8. Summer Yearling, May 1 - Aug. 31, preceding yr.

9. Jr. Yearling, Jan. 1 - April 30, preceding yr.
10. Sr. Yearling, Sept. 1 - Dec. 31, second preceding yr.
11. Cow and Calf – Cow, any age, with natural calf born after Jan.1 of the current year
12. Grand Champion Female (Ribbon)

#### Market Stock:

**AWARDS: Excellent 20 units, Good 17 units, Worthy 14 units**

#### Rules:

- Open to all breeds of beef cattle including purebreds, grades, and crossbreeds.
- Requirements- steer or maiden heifer **NOT** entered in breeding classes.
- Weight will be determined by tape measurement if questioned.
- **Must be owned by February 1st**

#### Market Stock: Class Numbers:

13. Feeders under 900 lbs.
14. Market Stock, medium weight 900-1100 lbs.
15. Market Stock, heavy weight over 1100 lbs.
15. Grand Champion (Ribbon)

### SECTION 13 - OXEN

#### Rules:

- Please enter the appropriate Fitting and Showmanship Class
- **Cloverbud activities** must be closely supervised. Feeding, watering, and some grooming are appropriate for this age because they involve measuring, physical activity and stimulate immediate positive responses from the animal that members can enjoy and remember. Sole responsibility for cattle ownership, training, grooming, milking, and showing is inappropriate for cloverbuds. A cloverbud may share the responsibility for raising calves.
- Competition is open to enrolled 4-H'ers (by June 1st) 4-H and FFA. Members from Lewis County.
- All animals must meet the requirements of the Cattle Department (see Dept. 02)
- All exhibits must be clean and in order for the public by 8:30 a.m. daily or they will not be allowed to participate in cattle shows.
- All cattle exhibited must have been cared for and owned by the exhibitor since June 1<sup>st</sup> of this year. All purebred animals must be registered in a single member's name only.
- Non-ownership animals must be cared for by exhibitor by June 1st and non-ownership form must be on file at 4-H office by June 1<sup>st</sup>.
- Two (2) pairs of animals per class per exhibitor - maximum. Non-ownership limited to one (1) pair of animals.
- In case of an animal entry registered or transferred to the exhibitor and the registration paper has not been received, a statement from the secretary of the BREED Association will be NECESSARY for acceptance of entry (**Applies to 4-H only**).
- **No feed or bedding will be furnished by the fair association.**
- **All 4-H oxen must be entered in the 4-H office by June 25th.**
- 4-H and FFA members must be present at the time of judging. Each member is expected to be responsible for the showing of his/her own animal. Exceptions can be made under such circumstances or conditions as the 4-H program staff and/or Cattle Superintendent may determine necessary.
- **Open classes will be accepted at the fair office until 9:00 pm on Wednesday, July 9<sup>th</sup> (Mail entries by July 5<sup>th</sup>.)**
- Exhibitors must have registration papers in possession until after show day.

#### Fitting and Showmanship

**AWARDS: Excellent 12 units, Good 10 units of money, worthy - 8 units of money**

#### Class Number:

1. Sr. Fitting & Showmanship (14 -18 year olds)
2. Jr. Fitting & Showmanship (8-13 year olds)
3. Novice Fitting & Showmanship (2 years or less showing)
4. Showmanship Award will be for Grand Champion Showman
5. Cloverbud, Show & Tell (Fitting & Showmanship) 5-7 years of age

### Best Trained Class

**AWARDS: Excellent 20 units, Good 17 units, Worthy 14 units of money**  
**Class Number:**

6. Best Trained Team- participant will demonstrate their expertise by taking their team through a timed obstacle course

## SECTION 14 - SWINE

**AWARDS: Excellent 12 units, Good 10 units, Worthy 8 units of money.**

### RULES:

- All swine must be accompanied by a certificate indicating freedom from any contagious diseases (refer to general rules).
- Only 2 entries may be made by one exhibitor in each class.
- Purebreds or crossbreeds.
- Animals may be entered as breeding or market stock. Not Both.
- Animals must be owned by June 1<sup>st</sup>.

### Showmanship:

#### Class Numbers:

1. Swine Showmanship, Sr. (14 -18 years old)
2. Swine Showmanship, Jr. (8-13 years old)
3. Swine Showmanship, Novice (2 years or less of showing)
4. Award will be awarded for grand champion showman
5. Cloverbud Show & Tell Class - Guidelines available from Cooperative Extension 4-H Office for youth at least in kindergarten thru 8 years of age as of January 1 of current year.

### Breeding Classes:

#### Class Number:

6. Senior fall Gilt (Farrowed on or after July 1, of last year.)
7. January spring Gilt (Farrowed on or after January 1, of the current year.)
8. February spring Gilt (Farrowed on or after February 1 of the current year but before March of the current year.)
9. Junior spring Gilt (Farrowed on or after March 1 of the current year.)
10. Grand Champion-(Ribbon)

### Market Classes:

11. Heavy weight market hog, barrow or gilt. (Maximum 255 lbs)
12. Medium weight hog, barrow or gilt. (200-214 lbs.)
13. Light weight market hog, barrow or gilt. (175-199 lbs.)
14. Grand Champion-(Ribbon)

## SECTION 15 – LLAMA AND ALPACA

**AWARDS: Excellent 12 units, Good 10 units, Worthy 8 units of money**

- All llamas and alpacas must be accompanied by a NYS Certificate of Veterinary Inspection (CVI) dated within 30 days of July 19, 2010 and a certificate of a negative TB test. All health papers must be available upon request.
- In addition **all alpacas MUST** be BVDV negative by PCR or VI test and so noted on the CVI. (There is no time restriction on when the BVD test was done). In addition, all exhibitors must have available a copy of the lab results with the CVI available if requested.
- Exhibitors allowed only 2 entries per class.
- The exhibitor must own all animals by **June 1st of current year.** (A non-owned animal may be shown if the exhibitor designates the animal as a project animal and starts care for the animal by **June 1st.** Only one non-owned animal may be shown per species by an exhibitor and only if they do not already own one of designated species. An approved certificate of non-ownership must be on file at the Lewis County Cooperative Extension 4-H Office by **June 1st.**)
- It is recommended that exhibitors 8 years through 12 years of age not show intact males over 2 years of age. Youth between the age of 8 and 12 must apply to the 4-H office if they want to show an intact male over the age of 2 years old. The choice of acceptance or decline will be based on an onsite evaluation by 4-H staff of the youth and the animal interactions and final decision lies within the 4-H Office.
- Registration papers must be available for inspection until after show time.

### Class Numbers:

1. Sr. Showmanship (14-18 years old)
2. Jr. Showmanship (8-13 years old)
3. Novice Showmanship (2 years or less showing experience)
4. Grand Champion Showman – Award
5. Cloverbud, Show & Tell
6. Juvenile Male (less than 1 year old)
7. Yearling Male (1 year to less than 2 years old)
8. Two yr. old Male (2 years to less than 3 years old)
9. Adult Male (3 years old and over)
10. Grand Champion Male - Ribbon
11. Juvenile Female (less than 1 year old)
12. Yearling Female (1 year to less than 2 years old)
13. Two Year Old Female (2 years to less than 3 years old)
14. Adult Female (3 years old and over)
15. Grand Champion Female – Ribbon
16. Grand Champion Male – Ribbon



## SHEEP

### RULES:

- Each exhibitor of sheep shall present a health certificate indicating that his flock is free of all contagious or infectious diseases and is not under quarantine (refer to general rules).
- Exhibitors allowed only 2 entries per class.
- Registered or crossbred. Registration papers must be available for inspection until after show time.
- In Sheep Showmanship Classes - halters allowed in class 4 & 5 only.
- Sheep may be shown either in breeding classes or market - NOT BOTH
- Market lambs must be slick shorn to hips within 10 days of show
- Sheep must be fitted & shorn to breed standards.
- Animals must be owned by June 1<sup>st</sup>.

## SECTION 16 - SHEEP SHOWMANSHIP

**AWARDS: Excellent 12 units, Good 10 units, Worthy 8 units**

### Class Numbers:

1. Sheep Showmanship, Sr. (14-18 years old)
2. Sheep Showmanship, Jr. (13 & under)
3. Sheep Showmanship, Novice (2 years or less showing)
4. Sheep Halter Showmanship (animals shown on halter, exhibitor wearing regular show clothes- (for novice only)
5. Sheep Leadline Showmanship - Sheep will be shown totally with a halter and exhibitor will wear an article of wool clothing. Judging will be based on preparation, presentation, control of sheep and the exhibitor's outfit.( Extra consideration will be given to outfits made by exhibitor).
6. Master Showman Award (1st & 2nd place from Sr., Jr. & Novice Showmanship classes)
7. Cloverbud, Show & Tell (5-7) years of age as of January 1<sup>st</sup> of the current year

SECTION	TITLE	CLASSES
SECTION 17	SHEEP OXFORD	1 - 9
SECTION 18	SHEEP HAMPSHIRE	1 - 9
SECTION 19	SHEEP SUFFOLK	1 - 9
SECTION 20	SHEEP DORSET	1 - 9
SECTION 21	SHEEP CORRIEDALE	1 - 9
SECTION 22	SHEEP ROMNEY	1 - 9
SECTION 23	SHEEP OTHER PUREBRED	1 - 10
SECTION 24	SHEEP COMMERCIAL	3,5,7,8,11,12,13

**AWARDS: Excellent 12 units, Good 10 units, Worthy 8 units**

### Class Numbers: (base dates are September 1 and January 1)

1. Jr. Ram Lamb (Jan. 1, 2010---until now)
2. Sr. Ram Lamb (Sept. 1, 2009---Jan. 1, 2010)
3. Yearling Ram (Up to 2 years of age)
4. Jr. Ewe Lamb (Jan. 1, 2010---until now)
5. Sr. Ewe Lamb (Sept. 1, 2009---Jan. 1, 2010)
6. Yearling Ewe (Up to 2 years of age)
7. Mature Ewe (Over 2 years of age)
8. Exhibitors Flock - The flock will contain from one breed a ram under 2 and two ewes each from a different age class all owned by exhibitor



9. Grand Champion for each breed - Ribbon only- (1st place from each of the above classes)
10. Best of Show - Ribbon Only - (Grand Champion from each breed eligible).

**MARKET LAMBS:**

**AWARDS: Excellent 12 units, Good 10 units, Worthy 8 units of money**  
**RULES:**

- Market lambs may be purebred, grade or crossbred ewes or wethers born on or after January 1 of the current year.
- Ewe lambs shown as breeding stock not eligible for this section.
- Novice youth may enter showmanship Class 3 or 4, but not both. (Novice is youth with 2 years showing experience or less).

**Class Numbers:**

11. Market lamb weighing 100 lbs or more
12. Market lamb under 100 lbs
13. Grand Champion Market Lamb (Ribbon)

**SECTION 25 - GOATS**

**AWARDS: Excellent 12 units, Good 10 units, Worthy 8 units of money**

**Rules:**

- All goats must be accompanied by a certificate indicating freedom from any contagious disease.
- Only 2 entries per class.
- Purebreds or crossbreeds. Registration papers must be available for inspection until after show time.
- All animals must be owned by June 1st.
- No dairy goats with horns allowed.
- Bucks are not allowed to be shown as a 4-H animal project.
- Provide scrapie ID# if animal is not registered.
- All dairy goats must be registered if shown at the NYS Fair.

**Class Numbers:**

1. Sr. Showmanship (14-18 years old)
2. Jr. Showmanship (13 years and under)
3. Novice Showmanship 2 years or less showing experience
4. Showmanship Award will be for Grand Champion Showman
5. Cloverbud, Show & Tell
6. Young buck kid or wether born the current year
7. Doe Kid less than 4 months.
8. Doe Kid 4 months, & under 8 months
9. Doe Kid 8 months, & under 12 months
10. Doe 12 months & under 24 months, dry
11. Junior Champion - Ribbon Only
12. Doe 12 months & under 24 months, in milk
13. Doe under 2 years, in milk
14. Doe, 2 years & under 3 years
15. Doe, 3 years & under 5 years
16. Doe, 5 years & older.
17. Senior Champion - (Ribbon)
18. Meat Goats
19. Champion Meat Goat (Ribbon)
20. Pygmy Goats
21. Champion Pygmy Goat (Ribbon)
22. Best of Show (Ribbon) All Champions eligible



**SECTION 26 – MISCELLANEOUS SMALL ANIMALS AND LIVESTOCK**

**Class Number:**

1. **Educational Display or Poster:**

**AWARDS: Excellent 5 units, Good 3 units, Worthy 2 units.**

- The exhibit is to show the "science whys and how's" of the 4-H or FFA Project.
- It may illustrate such topics as: major breeds; breeding systems; reproduction; genetics; feeds & feeding; wholesale vs. retail cuts; marketing; judging & selection; animal disease; career opportunities; or anatomy in the animal science project.
- Displays should be no larger than 30" in height, width and depth.
- Poster should be no larger than 24" x 30" in width & height

2. **Signs used for identification of animals and farm.**

**AWARDS: 5 units of money**

- Judged on workmanship and neatness
- Identifications signs may only evaluated one year, cannot be entered multiple years.

3. **Livestock Costume Class**

**AWARDS: Excellent 12 units, Good 10 units, Worthy 8 units.**

- Thursday, July 22<sup>nd</sup> (following livestock classes)

**AWARDS: Excellent 6 units, Good 4 units, Worthy 2 units**

4. **Poultry Costume**
5. **Cavies Costume Class**
6. **Rabbit Costume Class**

**Classes 4-6 will run Tuesday following the 3 species' breed classes**

**4-H & FFA POULTRY SHOW**

**Tuesday, July 20<sup>th</sup>**

**Individual Bird Judging – 10:00 a.m.**

**Showmanship – 1:00 p.m.**

**RULES:**

- All birds must have been owned and cared for by the exhibitors since June 1st of the current year.
- 2 entries per class, except for showmanship (one entry)
- No diseased birds will be accepted for exhibit.
- A trio will consist of one male and two females and is considered one entry.
- We suggest that all birds be isolated for three weeks before being returned to the flock because of the possibility of contracting disease.
- This section is open to any enrolled 4-H or FFA member.
- Entries must be in the 4-H office by June 25th.
- **Exhibitor needs to fill out a 3 x 5 card for each entry.**
- **REFRAIN FROM FEEDING BEFORE JUDGING.**



**SECTION 27 – POULTRY SHOWMANSHIP (For all poultry sections)**

- The Exhibitor will take their bird from a cage, present their entry to the judge and return it to the cage.
- Limit to 1 entry per exhibitor.
- Each contestant must show his/her own bird.
- The judge in making the awards shall consider the following:
  - Appearance and ability of the showman.
  - Preparation of the bird for show.
  - Condition and fleshing of the bird.
  - Handling of the bird.
  - Knowledge of the breed.

**AWARDS: Excellent 6 units, Good 4 units, Worthy 3 units of money**

**Class Numbers:**

1. Sr. Showmanship (14-18 years old)
2. Jr. Showmanship (8-13 years old)
3. Novice Showmanship (2 years or less showing)
4. Showmanship award will be for Grand Champion Showmanship
5. Cloverbud, Show & Tell (5-7) as of January 1<sup>st</sup> of the current year

## SECTION 28 - CHICKENS

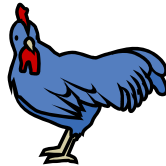
### RULES:

- All birds shown in classes other than AOV will be judged according to the American Standard of Perfection.
- Birds of unknown breeds may be shown as AOV (any other variety) in Classes 3 & 6 (standard size bird) or Classes 12, & 15 (Bantam size bird)
- Individual birds may be entered in bred classes or production --NOT BOTH

### Standard Breed Bird Class Numbers:

**AWARDS: Excellent 6 units, Good 4 units, Worthy 3 units of money**

1. Cockerel - under 1 year
2. Cock - 1 year and over
3. AOV Male, any age
4. Pullet - under 1 year
5. Hen - 1 year and over
6. AOV Female, any age
7. Young Trio
8. Old Trio
9. Grand Champion (Ribbon)



### Bantam Breeds Class Numbers:

**AWARDS: Excellent 6 units, Good 4 units, Worthy 3 units of money**

10. Cockerel - under 1 year
11. Cock - 1 year and over
12. AOV Male, any age
13. Pullet - under 1 year
14. Hen - 1 year and over
15. AOV Female, any age
16. Young Trio
17. Old Trio
18. Grand Champion (Ribbon)

### Production Bred Birds Class Numbers: (Crossbreeds may be entered in this section)

**AWARDS: Excellent 6 units, Good 4 units, Worthy 3 units of money**

19. Fryer - Meat Production (under 13 weeks of age, either sex)
20. Roaster - Meat Production (3 to 5 months of age, either sex)
21. Pullet - Egg Production (female, under 1 year)
22. Hen - Egg Production (female, over 1 year)
23. Grand Champion (Ribbon)

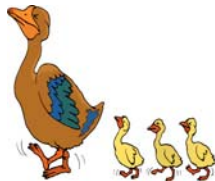
## SECTION 29 – DUCKS

(Any standard or mixed breed) accepted)

**AWARDS: Excellent 6 units, Good 4 units, Worthy 3 units of money**

### Class Numbers:

1. Young drake - male under 6 months
2. Old Drake - male - over 6 months
3. Young duck - female under 6 months
4. Old Duck - female - over 6 months
5. Young Trio
6. Old Trio
7. Grand Champion (Ribbon)



## SECTION 30 – GEESE

(any standard or mixed breed accepted)

**AWARDS: Excellent 6 units, Good 4 units, Worthy 3 units of money**

### Class Numbers:

1. Young gosling - female under 1 year
2. Young gosling - male - under 1 year
3. Old goose - female over 1 year
4. Old Gander - male over 1 year
5. Grand Champion (Ribbon)

## SECTION 31 – TURKEYS

(Any standard or mixed breed accepted)

**AWARDS: Excellent 6 units, Good 4 units, Worthy 3 units of money**

### Class Numbers:

1. Young Poultry - female - under 1 year
2. Young Poultry - male - under 1 year
3. Old Hen - female - over 1 year
4. Old Tom - male - over 1 year
5. Grand Champion (Ribbon)

## SECTION 32 – PIGEONS

(Any standard or mixed breed accepted)

**AWARDS: Excellent 6 units, Good 4 units, Worthy 3 units of money**

### Class Numbers:

1. Male
2. Female
3. Grand Champion

## SECTION 33 – CAVIES (GUINEA PIG)

Tuesday, July 20th

Individual Cavies Judging – 10:00 a.m.

Showmanship - 1:00 p.m.

**AWARDS: Excellent 6 units, Good 4 units, Worthy 3 units of money.**

### RULES:



- Senior - more than 6 months & more than 2 lbs.
- Intermediate - less than 6 months, 1 lb. 6 oz. to 2 lbs.
- Junior - less than 4 months, less than 1 lb. 6 oz.
- Exhibitors must provide their own cage.
- Only one entry for showmanship class.
- **Entries must be in the 4-H office by June 25<sup>th</sup>**

### Class Numbers:

1. Sr. Showmanship
2. Jr. Showmanship
3. Novice Showmanship (2 years or less showing)
4. Showmanship Award
5. Cloverbud, Show & Tell
6. Sr. Boar
7. Intermediate Boar
8. Jr. Boar
9. Champion Boar (Ribbon – Best of Show)
10. Sr. Sow
11. Intermediate Sow
12. Jr. Sow
13. Champion Sow (Ribbon – Best of Show)
14. Sow & Litter (minimum of 4 weeks old)
15. Grand Champion (Ribbon)

**4-H Project Cavies (any cavies of unknown or mixed breed origin)**

**AWARDS: Excellent 6 units, Good 4 units, Worthy 3 units of money**

16. Sr. Boar
17. Intermediate Boar
18. Jr. Boar
19. Champion Boar (Ribbon – Best of Show)
20. Sr. Sow
21. Intermediate Sow
22. Jr. Sow
23. Champion Sow (Ribbon – Best of Show)
24. Sow & Litter (minimum of 4 weeks old)
25. Grand Champion (Ribbon)

## SECTION 34 - RABBITS

**Rabbit Show - Tuesday, July 20th**  
**Individual rabbit judging – 10:00 a.m. (following cavies)**  
**Showmanship – 1:00 p.m. (following cavies)**

### RULES:

- Must have been owned and cared for by the exhibitors since June 1st of the current year.
- Only 2 entries per class.
- List of breeds for each category is available from 4-H Office.
- No diseased rabbits will be accepted for exhibit.
- This section is open to any enrolled 4-H or FFA member.
- Entries must be in the 4-H office by June 25th.
- **Exhibitor needs to fill out a 3 x 5 card for each cage.**

### Showmanship:



- The exhibitor will bring their animal from the cage, present it to the judge, name the breed and class, pose the rabbit, check ears, teeth, feet, nails for condition, nose, and eyes, sex the rabbit, then return the rabbit to the cage.

- Animals are judged on the Danish System based on accuracy of information - 30 points; Manner in which rabbit is examined - 30 points; Control of Rabbit - 20 points; Exhibitor general appearance and attitude - 20 points.

**AWARDS: Excellent 6 units, Good 4 units, Worthy 3 units of money**

### Class Numbers:

1. Senior Rabbit Showmanship
2. Junior Rabbit Showmanship
3. Novice Rabbit Showmanship (2 years or less showing)
4. Showmanship Award will be for Grand Champion Showmanship
5. Cloverbud, Show & Tell

### Commercial Breeds (any purebred)

**AWARDS: Excellent 6 units, Good 4 units, Worthy 3 units of money**

### Class Numbers:

6. Junior Buck - 3 months to 6 months of age
7. Intermediate Buck - 6 months of age to 8 months of age
8. Senior Buck - 8 months and over
9. Champion Buck (Ribbon – Best of Show))
10. Junior Doe - 3 months to 6 months of age
11. Intermediate Doe - 6 months to 8 months of age
12. Senior Doe - 8 months and over
13. Champion Doe (Ribbon – Best of Show)
12. Grand Champion (Ribbon)

### Fancy Breeds (any purebred)

**AWARDS: Excellent 6 units, Good 4 units, Worthy 3 units of money**

### Class Numbers:

15. Jr. Buck - 3 months - 6 months
16. Sr. Buck - over 6 months
17. Champion Buck (Ribbon – Best of Show)
18. Jr. Doe - 3 months - 6 months
19. Sr. Doe over 6 months
20. Champion Doe (Ribbon – Best of Show)
21. Grand Champion (Ribbon)

### 4-H Project Rabbit (any rabbit of unknown or mixed breed origin)

**AWARDS: Excellent 6 units, Good 4 units, Worthy 3 units of money**

### Class Numbers:

22. Junior Buck - 3-6 months
23. Senior Buck - over 6 months
24. Champion Buck (Ribbon – Best of Show)
25. Junior Doe – 3-6 months
26. Senior Doe – over 6 months
27. Champion Doe (Ribbon – Best of Show)
28. Grand Champion (Ribbon)

## SECTION 35 - DOGS

**Saturday, July 24<sup>th</sup> TO FOLLOW OPEN DOG SHOW**  
**Judging 2:00 pm - Dairy Show Ring**

**AWARDS for all classes: Excellent 10 units, Good 8 units, and Worthy 6 units of money**

### OBEDIENCE CLASSES

#### Class Numbers:

#### 1. Beginner Class A

- For 4-H'ers who *have not* previously trained a dog.
- The dogs in this class must not have graduated beyond the Beginner Level
- All exercises (Heel on Leash and Figure \*, Stand for Examination, Recall, Long Sit – 1 minute, Long Down – 3 minutes) will be performed with the dog on a lead.
- The maximum possible score is 160 points.

#### 2. Beginner Class B:

- For 4-H'ers who *have previously trained* a dog in Beginner or more advanced levels of obedience.
- Dogs must not have graduated beyond the Beginner Level.
- Exercises and maximum possible points are the same as in Beginner A Class.

#### 3. Graduate Beginner Class A:

- For 4-H'ers who *have not previously trained* a dog beyond the Graduate Beginner level.
- Dogs must not have graduated beyond the Graduate Beginner level.
- Exercises and maximum possible points are the same as in the Beginner A and B Classes, except that the Stand for Examination, Recall, Long Sit and Log Down exercises are done with the dog OFF LEASH.

#### 4. Graduate Beginner Class B:

- For 4-H'ers who *have previously trained* a dog in graduate beginner or more advanced levels of obedience.
- Dogs must not have graduated beyond the Graduate Beginner level.
- Exercises and maximum possible points are the same as in Graduate Beginner Class A.

#### 5. Grooming and Handling Class A:

- For 4-H'ers who are competing for **the first time** in Grooming and Handling. Unless the handler has qualified for the open class of junior showmanship at an AKC show.

#### 6. Grooming and Handling Class B:

- For 4-H'ers who *have previously competed* in Grooming and Handling.

#### 7. Grooming and Handling Class C:

- For 4-H'ers who *have previously* been a Grooming and Handling Class B Champion and/or have qualified for the Open Class of Junior Showmanship at an AKC show, even if it is their first year.

#### 8. Rally Obedience Level One

- Course shall consist of 12-15 stations plus start and finish signs. This course is open to dogs at all levels of obedience. Level 1 will be performed on leash. Dogs receiving blue ribbons must move up to next level. Dogs who have received a Rally Level 1 (R1) Title must move to level 2.

## SECTION 36 – POCKET PETS (Hamsters, Gerbils, Mice, Rats, etc.)

### Class 1

**AWARDS: 4 Units of Money**

- Youth owning "Pocket Pets" are invited to sign up with the 4-H Office to schedule a time to exhibit their pet in the Youth Building.
- The 4-H'er will be required to bring in their pet on a specific day and interact with the public in **two one-half hour time slots** during that day.

- The 4-H'er should be able to talk about the pet, how to care for it, what to feed it, what its living facility should be like, what it likes to do and perhaps some background concerning where it is from.
- The 4-H'er will be required to furnish their own cage and food for their pet during the stay.
- The public will NOT be allowed to handle any pocket pets.
- The 4-H'er is responsible for the animal when not interacting with the public.
- All pets will return home with the 4-H'er on the same day.

## SECTION 37 - CLOVERBUDS

- Cloverbuds are youth in Kindergarten thru second grade who participate in the Lewis County 4-H Youth Development Program.
- Cloverbuds are not eligible to receive premiums at the Lewis County Fair.
- Exhibits **will not** be judged according to the Danish System.
- Evaluation or judging is inappropriate for their age and stage of development.
- Cloverbuds MUST complete a "Cloverbud" double entry card for each item exhibited.
- Cloverbud work will be presented in a "show and tell" manner to a specially designated adult in the Youth Building on Monday, July 19th.
- Participation is encouraged and recognition will be provided by the Lewis County Private 4-H Fund.
- Cloverbuds are invited and may present their tangible items that are products of their 4-H work.
- Cloverbud participants will receive a special Cloverbud Ribbon.
- In addition, for each project area exhibited in, Cloverbuds will receive an ice cream treat redeemable at the Lewis County Dairy Princess booth during county fair.

## 4-H GARDEN ENTRIES

This division offers an opportunity to display a garden item and gives participants an occasion to show the products of their gardening efforts.

- Exhibit must be grown by the exhibitors in their **individual, family or community gardens**.
- Individual may display **5 entries** in any one class, but each must be a distinctly different variety type.
- Exhibits and awards will be evaluated based on standards below.
- Exhibit must be labeled with correct common name and variety name (i.e., snap beans, Blue Lake; or petunia, Red Picotee). **Otherwise, awards will be downgraded.**

- **Excellent (Blue Ribbon)** - clean; only very minor defects in general appearance; best market size and quality; true to variety characteristics. For exhibits with more than one specimen: not more than 10 percent variation in sizes for fruits and vegetables and cut flowers; only slightly detectable variation, uniform in shape, color and degree of maturity.

- **Good (Red Ribbon)** - clean; slight defects in general appearance; defective and unusable parts should not exceed 5 percent; good market size and quality. Exhibits with more than one specimen: not more than 25 percent variation in sizes for fruits and vegetables, and cut flowers; only slightly detectable variation in shape, color and degree of maturity.

- **Worthy (White Ribbon)** - fairly clean; some defects in general appearance; defective and unusable parts should not exceed 10 percent; fair market size and quality. Exhibits with more than one specimen—not more than 100 percent variation in sizes for fruits and vegetables and cut flowers; noticeable variation in shape, color or degree of maturity.

- **No Award** - dirty, serious damage apparent; defective and unusable parts exceed 10 percent; unsatisfactory market size or quality. Exhibits with more than one specimen — more than 100 percent variation in sizes for fruits and vegetables; extreme differences in shape, color or degree of maturity.

**Immature vegetables will be taken into consideration for the county growing season at County Fair only (not State Fair).**

## SECTION 38 - VEGETABLES

**AWARDS: Excellent – 3 Units, Good – 2 Units of Money**

### Class Number

1. Beans, lima, 6 green pods, edible beans
2. Beans, snap, green, 10 pods
3. Beans, snap, yellow, 10 pods
4. Beans, snap, pole or veining type, 10 pods
5. Beans, green shell, 10 pods, any variety including edible soy, Horticultural, Kentucky Wonder
6. Beans, dry shelled, 1/2 cup in container, dry field bean variety including mung, adzuki, fava
7. Beets, 3, tops trimmed to 1 inch, no green shoulders
8. Broccoli, 1 head or bunch of small heads, 5 inches or more in diameter
9. Brussels Sprouts, 1 pint basket
10. Cabbage, 1 head, 2 to 4 pounds, with 3 to 4 wrapper leaves, any fresh market variety
11. Carrots, 3, tops trimmed to 1 inch, no green shoulders
12. Cauliflower, 1 head, leaves cut just above head
13. Celery, 1 plant, market quality, roots off
14. Chard, 1 plant, roots and damaged leaves off
15. Chinese Cabbage, 1 head
16. Chinese Cabbage, loose leaf, roots off, 1 plant
17. Corn, Sweet, 3 ears, husks removed completely, shank trimmed to 1/2 inch, display in transparent bag
18. Cucumbers, 2 slicing types, 5 inches or longer, 2 inches or less in diameter
19. Cucumbers, 5 pickling type, 3 to 5 inches
20. Cucumbers, 10 pickling type, less than 3 inches
21. Dill, bunch of 6 seed heads, tied or in transparent bag
22. Eggplant, 1 large oval and oblong types such as Black Beauty, Black Magic, Black Enorma, Dusky
23. Eggplant, 2 small, slender and round types such as Easter Egg, Ichiban, Long Tom, White Beauty
24. Endive, 1 plant, roots off, good market size
25. Garlic, 3 bulbs, dried, braided together or tops trimmed to 1 inch, cleaned, not peeled
26. Herbs, any kind, plant in pot or tied bunch
27. Kale, 1 plant, roots off
28. Kohlrabi, 2, tops and tap root trimmed to 2 inches
29. Leek, 3 large, trimmed
30. Lettuce, leaf, 1 plant, roots off, good market size
31. Lettuce, head, 1 plant, roots off, good market size
32. Muskmelon and honey dew melon, 1 good market quality
33. Mustard, 1 plant, roots off
34. Okra, 6, 1 1/2 to 3 inches long
35. Onions, bulbs, 3 tops trimmed to 1/2 inch, well cured and dried, not peeled
36. Onions, 6, green bunching type, tops on but trimmed evenly
37. Parsley, 1 plant, roots off, good market size and quality
38. Parsnips, 3 tops trimmed to 1 inch
39. Peas, 10 pods
40. Peppers, 2, large types such as Bell, Cubanelle, Italian Sweet
41. Peppers, 3, small types such as Banana, Hungarian Wax, Cherry, Jalapeno
42. Potatoes, 3 tubers, 5 to 10 ounces
43. Potatoes, 1 pint basket, salt potato types, 3/4 to 1 1/4 inch diameter
44. Pumpkin, 1, ripe, any variety
45. Radish, 1 pint basket, tops trimmed to 1/2 inch
46. Rhubarb, 6 stalks, tops trimmed
47. Rutabaga, 1, tops trimmed off
48. Shallot, 3, tops trimmed to 1/4 inch, dried, not peeled
49. Spinach, common, 1/2 pound in transparent bag
50. Spinach, New Zealand, 1/2 pound, bunch or tender tips 3 to 6 inches, tied or in transparent bag
51. Squash, summer, 2, young, skin tender, such as zucchini, yellow, scallop
52. Squash, winter, 1, any large types such as Hubbard, Delicious, Banana
53. Squash, winter, 2, any small types such as Buttercup, Butternut, Spaghetti, Table Queen, Golden Nugget
54. Squash, 1, soft and round stem, such as Big Max, Big Moon, Mammoth
55. Sweet potatoes, 3 roots, any variety

56. Tomatoes, 3, ripe, stems off, medium and large fruited varieties including Roma types
57. Tomatoes, cherry ripe, 1 pint basket, stems off, also Presto and small fruited types
58. Turnips, 3, tops trimmed to 1 inch
59. Watermelon, 1 mature, market size
60. A collection of 3 related types, such as 3 varieties of pepper, or 3 vegetables that appear in an ethnic cuisine
61. Miniature Vegetables, 6 of one type, harvested at small or baby stage
62. Ornamental Vegetables, 3, such as miniature pumpkins, gourds, decorative corn; ornamental kale (1 specimen)
63. Heirloom Vegetables, any variety from the Heirloom Garden bulletin, exhibited in same manner as other vegetable classes
64. Miscellaneous, any other vegetable not listed, display same number of specimens as similar crop listed
65. Vegetable/Fruit Art Creations
66. Container Garden; refer to project materials SEC

## SECTION 39 – ORNAMENTAL HORTICULTURE

### AWARDS: Excellent – 3 Units, Good – 2 Units of Money CUT FLOWERS

- Consist of 3 stems with the same color blooms except as noted.
- Gladiolus - ONE spike with at least 12-inch stem.
- Roses - ONE stem of the type listed.
- Dahlias - THREE blooms of one color, or ONE bloom if over 6 inches.
- Stems should be eight inches long, except where type of flower makes this impossible.
- Flowers that do not last as cut flowers (hollyhocks, impatiens, portulaca) may not be entered except in container garden.

#### Class Number

1. Aster (annual)
2. Bachelor Button
3. Calendula
4. Chrysanthemum (any form)
5. Cleome
6. Cosmos
7. Dahlia
8. Flowering Tobacco
9. Gladiolus
10. Larkspur
11. Marigold, French
12. Marigold, African
13. Marigold, Hybrid
14. Nasturtium
15. Ornamental Grass (foliage and fully developed seed head)
16. Petunia
17. Phlox-annual
18. Rose, Hybrid Tea
19. Rose, Floribunda
20. Rose, Grandiflora
21. Rudbeckia (Coneflowers, Black-eyed Susan)
22. Snapdragon
23. Statice (fresh, not dried)
24. Stock
25. Strawflower (fresh, not dried)
26. Sunflowers
27. Sweet Peas
28. Zinnia, baby-under 2"
29. Zinnia, medium 2-4"
30. Zinnia, large-over 4"
31. Container Garden/Hanging Planter
32. Miscellaneous, any other cut flower not listed, annual or perennial, display the same number of specimens as similar crop listed.

## INDOOR GARDENING

- House plants must be single stem or crown in proportional container.
- All items should follow recommended guides of balance, design, proportion and harmony.
- No artificial or plastic plant materials allowed.
- Ribbon and bows as part of the design are allowed.

#### Class Number:

33. Potted house plant - flowering
34. Potted house plant - foliage
35. Potted house plant - vine
36. Potted house plant - hanging container. More than 1 plant accepted.
37. Miniature house plant - 2 1/4"-3" pot maximum. (Example, miniature African violet)
38. Dish garden
39. Terrarium or closed eco system
40. Plaque of dried or pressed plant material; includes other craft projects made with *real* plant material (e.g. floral pictures)

## FLORAL DESIGN

#### Class Number:

41. Dry or fresh flower corsage in transparent bag
42. Table arrangement of live or dry plant material - not over 12" in diameter and under 8" in height
43. Holiday decoration of live, dried or natural plant materials - no more than 18" in diameter or 24" long

## FRUITS AND NUTS

- Exhibitors must care for all fruits and nuts.
- Nuts grown in the previous year may be entered.
- For more information on culture, consult: "Strawberry Yields Forever" - a day neutral strawberry 4-H project, available through the Department of Fruit & Vegetable Science "The Home Fruit Planting" - IB 156

#### Class Number:

44. Apples, 3, ripe, any single variety
45. Apricots, 5, ripe
46. Blueberries, 1 pint
47. Cherries, 1 pint basket, with stems, any single variety
48. Elderberries, attached to cluster, 1 quart
49. Grapes, 1 bunch
50. Nectarines, 4, ripe
51. Peaches, 4, ripe
52. Pears, 3, ripe, with stems, any single variety
53. Raspberries, 1/2 pint, any single variety
54. Strawberries, 1 pint, caps on
55. Other: minor fruits such as quince or persimmon, 4, ripe
56. Miscellaneous - any fruit not listed, display same number of specimens as similar crop listed
57. Nuts, all-ripe, dry, unshelled, 1 pint, any single variety
58. A collection of 3 types, such as 3 different varieties of apples

## SECTION 40 – HORTICULTURE SCIENCE

### AWARDS: Excellent – 4 Units, Good – 3 Units of Money

#### PLANT COLLECTIONS

Developing a plant collection will help youth to learn to recognize and identify different plant species.

##### A. Preserved

- Plants must be pressed, dry, mounted and labeled. To press plant material, it is best to use the method described in: Pressed Flower Pictures (1982), 141-IB-34, produced by Media Services at CCE, or as described by a person who has experience collecting plant material.
- A clear protective overlay is helpful for many, but not all exhibits.
- Weeds and other specimens mounted green (not pressed) will not be evaluated.
- Collections of plants may be on one side of ONE PIECE of poster board or like material, 22 x 28 inches in size, or in notebook binders with single specimens on pages 8 1/2 x 11 inches.

#### Class Number:

1. Leaf, Twig (and fruit, flowers and seed, if possible) of ten or more ornamental trees.

2. Leaf, Twig (and fruit, flower and seed, if possible) of ten or more ornamental shrubs.
3. Leaf, Twig and Illustration of fruit or nut, of ten or more fruit or nut plants.
4. Ten Weeds common to lawns and flowerbeds.
5. Ten Annual Flowers
6. Ten Perennial Flowers
7. Ten Wild Flowers
8. Ten Seeds (any single plant type, e.g., 10 ornamentals, 10 fruits, etc.)

#### B. Horticulture Scrapbook (Collection of plant pictures)

- May be cut from magazines or garden center catalogs, illustrated by your own drawings, photographs or photocopies.
- Write in the front or back of the catalog where your images came from if you did not make them yourself (for example: *Pictures are from W. Atlee Burpee 1998 seed catalog*).
- Each plant should be represented on its own 8 ½ x 11-inch page.
- Fasten pictures with clear tape, paper glue or rubber cement.
- Pages must be bound in notebook binder.
- Label with common name and brief description. Consult *NY Horticulture Contest Guidelines* for the plants required in each class.
- Beginners must include the 15 plants specified from each group—flowers and indoor plants; ornamentals; fruits and nuts, vegetables.
- Intermediates must include the 30 plants from each group
- Advanced participants must include all 45 plants from each group.

#### Class Number:

9. BEGINNER
10. INTERMEDIATE
11. ADVANCED

#### EXPERIMENTS

The intent of this division is to generate an interest among young people in a science-based approach to horticulture. **Guidelines and suggestions for the exhibitor working with plants:**

Both how you plan your experiment and the final description for your display should include the following sections:

- **Background.** Describe why you did this experiment and why it is important to you and other people?
- **The Question** (or hypothesis). What specific question does your experiment try to answer? For example: "Does watering geraniums with coffee increase their growth?"
- **Methods.** Outline how you did the experiment. Be sure to include:
  - a) **Treatments** - Describe specifically what you are comparing as treatments.  
Remember that you should have a check treatment (what is usually done) and the 'test' treatment. From the above question: Check = watering with water, and treatment = watering with coffee.
  - b) **Measurements** - Describe what you are measuring (weight, height, etc.) and why. Include observations of the plants over the course of the experiment.
- **Results.**
  - a) What did your measurements tell you about the treatment compared to the check? Was there a difference and if so, why do you think so?  
Use tables, graphs or pictures to share what you learned.
  - b) What other things did you notice in your observations?
- **Conclusions.** What did you learn? What is important about your results to other people? What would you suggest to someone else, based on what you learned?

**THE DISPLAY** should be interesting, attractive and neat, so that people will want to stop and learn about what you did. It should:

- Include actual examples of treated and untreated plants, if possible, otherwise use drawings or photographs.
- On sheets of paper, describe your study using the above 5 sections.
- Use big print so that it is easy to read from 3 feet away.
- Glue these sheets, along with any photos or graphs to heavy poster paper (14" x 22" minimum) for display.
- 4-H Fact Sheets are available from your 4-H Extension Educator.
- Consult for project ideas, but do not feel limited to these:
  - ➔ "Factors Influencing Seed Germination"
  - ➔ "Cultural Experiments in Vegetable Crops"
  - ➔ "Propagating Annuals, Perennials and Shrubs from Cuttings, Using a Heat Flat"

- ➔ "Exploring the World of Plants and Soils"
- ➔ "To Tent or Tunnel"
- ➔ "Strawberry Yields Forever"

#### Class Number:

- |                  |                        |
|------------------|------------------------|
| 12. Propagation  | 15. Cultural Practices |
| 13. Breeding     | 16. Miscellaneous      |
| 14. Soil Science |                        |

#### HORTICULTURAL METHODS

This division gives young people an interesting, different approach to growing plants. This enhances gardening skills and encourages the participant to think creatively.

- Because of the difficulty of reproducing some of the horticultural methods for exhibiting purposes, a poster or poster series format may be used.
- Use heavy poster paper (14" x 22" minimum) as a background.
- Glue or tape photos and diagrams, along with sheets of white paper that include your description within these sections: 1) *introduction*, 2) *growing method used*, 3) *what you learned or discovered*.
- Instead of a poster, an exhibit of the method itself (such as a small hydroponics set-up) can be displayed.
- Consult for display ideas: "Container Gardening" - Floriculture Fact Sheet
- "Grow with the Flow" - 141M7, "The Three Sisters: Exploring an Iroquois Garden" - 142LM15

#### Class Number:

15. Hydroponic Gardening
16. Season Extender Methods
17. Container Gardening
18. Miscellaneous – Any Horticultural Methods not listed

#### LANDSCAPE PICTURES AND PLANS

This division is a category in which youth can display what they have learned about the elements of design and how plants can be grouped effectively for ornamental or edible purposes. It also offers an opportunity to display their garden record keeping.

- All collections, pictures and plans will be enhanced by a clear, protective overlay.
- Markers, colored pencils or paints may be used to embellish the landscape plan.

#### Class Number:

19. Home Grounds Landscape Photographic Album
  - Must have at least six "before" and six "after" pictures of current year's work.
20. Plan or Map of Home Grounds
  - Drawn to scale. Show things as they were at beginning of project.
  - A second map, with suitable and necessary notes, showing changes and improvements made.
  - In different colors, show changes and improvements yet to be made. Indicate direction north on plan.
  - See "Young People's Guide to Landscaping."
21. Plan or Map of Apartment Dwelling
  - Drawn to scale, showing grounds as they are currently.
  - A second map, showing proposed changes that would improve existing grounds.
  - Where ground space is unavailable, a terrace or porch garden of containerized plants can be depicted.
  - Indicate direction north on plan.
22. Plan of Annual and or Perennial Flower Garden
  - Show varieties, name, placement, height and color.
  - Use scale no smaller than 1 inch equals 4 feet.
  - Indicate direction north on plan.
23. Plan of Home Orchard (tree fruit and/or berry crops)
  - Show varieties, name, placement, height and time of fruiting.
  - Use scale no smaller than 1 inch equals 4 feet.
  - Exhibit only current year's work.
  - Indicate direction north on plan.
24. Plan of Home Vegetable Garden
  - Show varieties, name, placement, height and approximate harvest times.
  - Succession of plants may be indicated by a tracing paper overlay.
  - Use scale no smaller than 1 inch equals 4 feet.

- Indicate direction north.
25. Plan of Community Service Beautification Project. (See NE 117, Community Beautification).
  26. Garden Record Book
    - List plants chosen and varieties.
    - List reason for selection
    - Garden design sketch, including lay-out, dimensions, and spacing
    - Indicate direction north
    - Photos showing before and after are helpful.

## SECTION 41 – AGRICULTURAL ENGINEERING, HANDYMAN AND ELECTRICITY

### AWARDS: Excellent – 4 Units, Good – 3 Units of Money

- Articles in this exhibit must have been made and selected according to 4-H standards during the current project year.
- Class 1 may have up to 10 entries
- Class 2 – 6 may have up to 3 entries in each class
- No stick craft accepted.

#### Class Number:

#### 1. WOOD SCIENCE PROJECT

##### **Hand Tool Division:**

- Article made in a Wood Science Project that was cut out, assembled and finished with hand tools only.

##### **Power Tool Division:**

- Article made in a Wood Science Project that has been partially or totally completed with power tools.

##### **Kit Division:**

- Article made in a Wood Science Project that is made from materials pre-cut by an outside resource (i.e., 4-H office, commercial supplier or woodworking leader) but is assembled and finished by the exhibitor.
- Judges will place emphasis on the quality of workmanship performed by exhibitor.

**Note:** Birdhouses entered in Class 1 will be evaluated under Wood Science standards. An explanation of the project and its relevance to natural resources and environmental education must be included. If appropriate the evaluators may move the birdhouse to the wildlife class under Environmental Education Section.

Projects involving both woodworking and electrical tasks should be entered in Class 2 – Electrical Science Projects. The project will be evaluated on the merits of both.

#### Class Number:

#### 2. ELECTRICAL SCIENCE PROJECTS

##### **Electric Division:**

- Article made in an Electric Project, such as a trouble lamp, test lamp, portable bench light, extension cords, pin-up or study lamp, or the rewiring of an old lamp is acceptable.
- Plug caps without terminal screws used on the electrical items show little if any skill on the part of the exhibitor and will be judged on that basis. (Tension restraint device must be in place, i.e. underwriters' knot, etc.).
- Lamps without bulbs or shades will not be considered complete and will not be accepted for exhibit.
- Projects involving both woodworking and electrical tasks will be evaluated on the merits of both.

##### **Electronics Division:**

- Article made in an Electric Project utilizing principles and construction procedures relating to electronics is acceptable.
- Projects will be evaluated on the basis of soldering and connection techniques, neatness of assembly and other assembly procedures for electronic projects.
- Projects must be hand wired and no breadboard kits will be accepted.
- Project must be operable (i.e. contain all necessary batteries).
- In addition include a short explanation of why or how the exhibit works and what use it has.

#### 3. EDUCATIONAL DISPLAYS (Ag. Engineering, Handyman, Electricity)

A series of posters (at least 14" x 22") and/or a 3-dimensional exhibit related to an engineering science project.

- Display should be self-explanatory through use of signs or labels and limited to approximately card table size.
- Topics may include such things as engine parts or bicycle parts display boards, electric circuit boards, electric quiz games, computer project display, safety rules for bicycling or working in a wood shop or with electricity.
- Entry will be evaluated on the purpose or principle idea, effectiveness in illustrating one idea, appearance, arrangement and description of the display.
- Exhibit must be self-explanatory.

#### 4. ROCKET PROGRAM

##### **Junior Division:**

- Any rocket made in a Rocket Program either from a kit or non-kit materials and totally assembled and finished by a **youth 13 years of age or younger.**
- Evaluators will place emphasis on proper kit assembly and finishing.

##### **Senior Division:**

- Any rocket made from non-kit materials and totally constructed and finished by a **youth 14 years and older.**
- Emphasis placed on proper construction techniques and finished product.
- Kits may be used when incorporated with other materials to meet the requirements of an Educational Display as outlined in Class No. 4.

#### 5. RELATED ENGINEERING SCIENCE PROJECTS (4-H Handyman)

- Any article made as a part of a directly related Engineering Science project - not included in Class 1 - 6., such as metalworking, cardboard carpentry, safety items, saddle bags (horse), dog leash (dog obedience), feed boards, knot boards (animal science), etc.
- Kits not acceptable for members 14 years and over.

## SECTION 42 - 4-H TRACTOR DRIVING CONTEST

Friday July 23<sup>rd</sup>, 10:30 a.m.

**AWARDS:** 1st - \$10.00, 2<sup>nd</sup>-\$8.00, 3<sup>rd</sup>-\$6.00, 4<sup>th</sup>-\$4.00 and 5<sup>th</sup>-\$2.00

#### Class Number:

#### 1. 4-H Tractor Driving Contest

- See rules listed in Department 12 - Section 4 of FFA Department
- Contestants must pre-enter at the Fair Office by 4:00 p.m. the Thursday of Fair.

## SECTION 43 – ENVIRONMENTAL EDUCATION / NATURAL RESOURCES

**AWARDS: Excellent – 3 Units, Good – 2 Units of Money**

- Only one entry per class.
- **Include a project story (essay) on a separate sheet stating (required)**
  - Why your project was interesting to you
  - Its relevance to natural resources and environmental education
  - Detailed information you learned. For example, if you build a bluebird box, explain what about the box makes it a good home for bluebirds, or observations/plans you might have to learn about bluebird behavior. Also, describe how the project will be used.
  - **If the project story does not accompany the exhibit, the exhibit will not receive a maximum grade.**
- Exhibits showing processes, products, skill development, and relevance to environmental/natural resource issues are strongly encouraged. **Overly simplistic or non-interpretive exhibits will receive less recognition.**
- Exhibits will be evaluated on the basis of their content, quality of expression and presentation. Creativity is encouraged as is display of materials showing observational skills, e.g. journals or sketchbooks. Age, experience and standards listed in appropriate 4-H publications will be included in the judging criteria.

**Class Number:**

**1. ENVIRONMENTAL EDUCATION**

- **Nature Trails** - e.g. Display of 4-H constructed nature trail or observation made along another nature trail.
- **Geology** - Simple collections must include the specimen's names, dates of collection, specific site(s) of collection (distance and direction to nearest town, county, state or province) and collector's name for 15 specimens. Inclusion of field journals is strongly encouraged and identification criteria must be completely and clearly defined. Exhibits showing evolutionary histories, adaptations of fossil organisms, vertical or horizontal studies of strata, or similar studies are encouraged.
- **Field Identification Projects** - *Please note that wildflowers are evaluated in Section 39 a - Horticulture, Fungi in Section 42 - Plant Pathology, and Insects in Section 42- Entomology.* Collections of preserved specimens, photographs or sketches properly labeled and showing identification criteria may be displayed for any habitat in New York. Consult your local Department of Environmental Conservation for guidelines and permission in collecting specimens from the wild. Consult *Field Guides Made Easy* for additional activities and ideas.
- **County or Self-initiated Projects** - that relate to environmental education. Examples include but are not limited to: interpretation of aerial photographs; vegetation maps; plant adaptations; demonstrations of ecological principles; or computer models like GIS. Transfer of display ideas and concepts from other project areas is encouraged.

**2. FISHERIES AND AQUATIC RESOURCES.**

- **Fisheries and Aquatic Resource Exhibits** - may be displays or records of any related activity including but not limited to fishing techniques, aquatic sampling methods, aquatic insect ecology, habitat improvement or fisheries management and biology. Other fishing projects may be found in 4-H Publications.
- **Water Monitoring** - project ideas may be found in *Water Worlds, Water Wise, Pond & Stream Safari.*
- **County or Self-initiated Projects** - related to fish or fishing, including mariculture, aquaculture, commercial fisheries, sport fisheries or related equipment, skills or observations.

**3. FORESTRY**

- Displays and presentations may be based upon, but are not limited to, the following projects: *Know Your Trees, Timber Management for Small Woodlands (IB 180); Wildlife and Timber from Private Lands: A Landowners Guide to Planning (IB 193); Woods of New York, Trees: Dead or Alive, Know Your Tree Diseases, "Maple Syrup Production for the Beginner,"* and other forestry exhibits based upon national, regional, county or self-initiated projects.

**4. RESOURCE-BASED RECREATION**

- Please remember that **a project story must be included**, giving complete explanation of the project and its relevance to natural resources and environmental education.
- **Shooting Sports** – any exhibit or record based upon content of the NYS Shooting Sports Programs or any of the New York State DEC certification programs.
  - **Other Outdoor Recreation** - Exhibits based upon related outdoor recreation activities, e.g. orienteering, cross-country skiing, snowshoeing, wilderness camping, or outdoor cookery.

**5. WILDLIFE**

- **Bird Study** - Consult "Bluebirds of New York," *Birds of Prey, Introduction to Bird Study*, or any other bird materials for exhibit ideas. **Please note, if a birdhouse is completed as a Wood Science project, it should be entered in Section J Technology & Engineering.**
- **Habitat Improvement** - Consult *Wildlife Habitat Enhancement, Enhancement of Wildlife on Private Land, Managing Small Woodlots for Wildlife* for exhibit ideas.
- **Trapping Furbearers** - Exhibits based upon the NYS DEC Trapper Training Program are acceptable, as are displays of equipment, pelt preparation, and discussions of the role of trapping in wildlife management.
- **Other Wildlife Projects** - Exhibits based upon New York's wildlife resources, *Environmental Awareness: Wildlife, Managing Small Woodlots for Wildlife; Wildlife Discovery, New York's Wildlife*

*Resources (fact sheets), and Wildlife in Today's Landscapes.* County projects or self-initiated projects are acceptable. A good source for a potential project is the 4-H Forestry and Wildlife Invitational.

**6. SOLID WASTE**

- Exhibits based on recycling or composting projects in the home or community.
- Clothing, crafts and other items created using post-consumer waste materials. Consult *Composting: Wastes to Resources; Wastewise; Woodsy's Resource Goldmine, Recycling in Your School Makes Good Sense; or Recycling: Mining Resources From Trash, or Composting in the Classroom* for exhibit ideas.

**7. PLANT PATHOLOGY LEAFSPOT COLLECTION BOOKLETS OR PLANT PATHOLOGY EXHIBITS**

- As described in *Know Your Plant's Disease*, and *Know Your Tree Diseases*, leaf disease notebooks or diseased plant specimens in Riker mounts may be exhibited.
- Other plant pathology exhibits based upon regional, county or self-initiated projects, or other exhibit ideas.

**8. VEGETABLE INSECT AND DISEASE CONTROL EXHIBITS INSECT AND DISEASE MANAGEMENT ON VEGETABLES PROJECTS**

- Must exhibit a 4-H member's experience in and knowledge of this subject matter. Exhibits derived from these projects should include one of the following:

**a) A display of preserved plant specimens**

- Pressed, dried or otherwise preserved in as life-like form as possible exhibiting symptoms of insect injury or plant disease.
- Where possible, the insect, which caused injury, should be properly mounted and included in the display.
- All specimens should be labeled as follows: vegetable name; insect or plant disease name; date specimen collected; collector's name and county.
- At least fifteen plant specimens should be included, depicting different insect or disease problems. Evaluation will be primarily weighted toward originality of display.

**b) A poster display showing the layout of your garden and indicating specific steps taken to manage pests within the past year or two.**

- A record book may be presented indicating dates on which problems were observed, treatments were utilized and observations were made as to the effectiveness of these treatments.
- This poster should attempt to teach those who examine it the principles of pest management.
- Photographs, drawings and other visual aids may be used.
- Evaluation will be based on the member's understanding of the subject and effectiveness of the poster as a teaching aid.

**9. FUNGUS COLLECTIONS**

**Fun With Fungi - Fungus Collections** must have a minimum of 12 distinctly different kinds of fungi (at least one gill fungus, one pore fungus and one bracket fungus). For full credit the dried collections should contain spring, summer and autumn specimens and be labeled in the manner described in *Fun With Fungi*. Displays should attempt to exhibit knowledge gained about fungi and their role in the environment. Collection boxes should have removable covers to allow close examination of each specimen during judging.

- **Photo Exhibits** - Photographs of fungi may be displayed according to the General Information in the Visual Arts Section. Fungi in photos must be identified by their common name and/or scientific name. Include with the title or caption the date and location of the photo.

Suggestions include:

- a) Photograph of a single fungus or group of fungi.
- b) A collection of three or more photographs of different fungi.
- c) 4 close-up photographs, taken hours, days or weeks apart, showing the growth and development of the same mushroom.
- d) 3 photographs taken one each during spring, summer and fall or 4 photographs including one in winter.

## GENERAL INSECT COLLECTIONS

- Insect specimens must be properly mounted and displayed and have complete collection data.
- Suggested display case described in 4-H Entomology Project Guide (available through your Extension 4-H Educator) or museum size insect drawers or polystyrene insect cases covered with clear plastic sheets.
- Exhibits incorrectly prepared will not be evaluated.

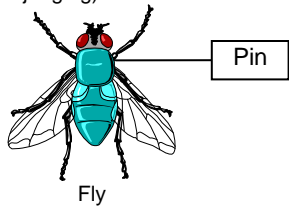
### Class Number:

#### 10. FIRST YEAR PROJECT EXHIBITS

- Must include a minimum of 20 specimens representing 5 insect orders.
- Classification need not be taken further than *order* names.
- Insects should be pinned properly and the wings of all butterflies and moths must be spread.

#### 11. SECOND YEAR PROJECT EXHIBITS

- Must include a minimum of 40 specimens representing 9 insect orders.
- Twenty specimens must have been collected during the current year.
- Twenty specimens must also be identified to common name with the name written on a label and pinned separately near the specimen (easily visible, to aid in judging) as shown in the sketch below:



- Addition of scientific names is optional in this class.
- Insects should be pinned properly and the wings of all butterflies and moths must be spread and at least one small insect must be mounted on a point or minuten pin.

#### 12. THIRD YEAR PROJECT EXHIBITS

- Must include a minimum of 60 specimens representing 12 orders.
- Thirty specimens must have been collected during the current year.
- Thirty specimens must be identified to common name.
- At least 5 specimens (representing at least five families) must be identified to family.
- Scientific names (genus and species) should be included wherever possible, although insects from some orders will be difficult to identify to this level; common names should be placed on a separate label pinned near the specimen as in Class No. 2.
- Insects should be pinned properly and the wings of all butterflies and moths must be spread and at least two small insects must be mounted on points or minuten pins.

#### 13. FOURTH YEAR (AND BEYOND) PROJECT EXHIBITS

- Must consist of general collections.
- Must include 80 specimens representing at least 12 orders.
- Forty specimens must have been collected during the current year.
- Forty specimens must be identified to common name.
- At least 10 specimens (representing at least 10 families) must be identified to their family. Scientific names should be included wherever possible. Common names should be placed on a separate label, pinned near the specimen as in Class No. 2.
- Proper mounting (pinned properly, wings of Lepidoptera spread, two small insects on points or minutenens) will be strongly emphasized.

## ADVANCED INSECT COLLECTIONS

- For advanced collections Riker mounts may also be used.
- Complete collection data should accompany all exhibits (where collected, date, and by whom?); can be placed on back of exhibit as long as the evaluator can tell which label goes with each specimen.
- If you exchange specimens, label as completely as possible, giving location (country, state or province, nearest town), date collected; name of collector; plus any ecological information available such as plant or insect host, habitat, etc.
- Imagination and individuality are encouraged.

- The rules for mounting, as set up for general collections, do not have to be followed, if, by doing so, the advanced collection can be enhanced. The scientific aspects and educational value, appearance, quality and arrangement will be evaluated.
- Additional statement should contain educational value to you (what you learned) as well as what you see the educational value to others to be.

### Class Number:

#### 14. ADVANCED COLLECTIONS

- Usually 3rd and higher year projects. However, 1st through 3rd year members can enter in this class as long as all project requirements are completed.
- Life cycle collections - minimum 4 species
- Single order collections - minimum 20 specimens, 5 families except Coleoptera – minimum 30 specimens, 5 families
- Collections of insects found on or in specific habitats such as ponds, streams, pine barrens, bogs, etc. - minimum 15 specimens, 3 orders.
- Collection of insects from a specific type of garden such as vegetable, flower, landscape planting (may include pests and beneficial insects where applicable) – minimum 15 specimens, 3 orders.
- Insect galls - minimum 15 specimens
- Insects and diseases of vegetables - enter under Section G, Plant Pathology, Class 2
- Collections of leaves containing leaf mining insects - minimum 10 specimens
- Collections of insects that feed upon or annoy domestic animals and pets - minimum 12 specimens.
- Insects collected from a single kind of plant, e.g. oak trees, shrubs, flowers - minimum 10 specimens
- Collection of insect - damaged leaves, twigs and wood (identify insects to order and plants to common name) - minimum 10 specimens
- Special study of one insect species. Honeybee exhibits may be entered here. See Exhibits of Living Insects for live exhibits.
- A general regional insect collection for eventual donation to a museum.
- Collections of butterfly parasites, insect eggs, camouflage & others – minimum 10 specimens
- Others are described in 4-H Entomology Project Guides

#### 15. PHOTO SLIDE COLLECTIONS

- Pictures must be on 2" x 2" slides.
- Minimum of 5 slides; maximum of 10.
- Slide subjects must be identified by common or Latin name.

#### 16. SINGLE COLLECTIONS PREPARED BY THE COMBINED EFFORTS OF A CLUB

- May be any kind of insect collection or may represent a group activity that can be presented as an exhibit.
- Regional insect collections prepared for eventual donation to a museum may be entered in this class if prepared by more than one person.
- Evaluation will be based on number of members and completeness of exhibit.

#### 17. LIVING INSECT EXHIBIT

- Exhibits must convey an educational message to the public and/or the educational opportunities in 4-H work in the field of Entomology.
- County 4-H staff must approve the exhibit prior to county fair
- Possible exhibits including living adult butterflies, butterfly chrysalides from which the adults are emerging, caterpillars, ant farms and aquatic insects in water tanks.
- Showing of a living exhibit requires that the exhibitor be on hand to care for the needs of his or her exhibit daily.
- Exhibits will be evaluated on: educational value; appearance; quality and arrangement.

## SECTION 44 – EXHIBITS AND LEADERSHIP

### COMMUNITY SERVICE LEARNING

**AWARDS: 1<sup>st</sup> - \$20; 2<sup>nd</sup> - \$15; 3<sup>rd</sup> - \$10 Honorable Mention – Ribbon (Premiums sponsored by Lewis County 4-H Fund)**

**Class Number:**

#### 1. Poster, Scrapbook (Pictures with Descriptions) or 3-Dimensional Exhibits

- Describing a community service project conducted by a group or individual.
- Creative use of visuals or samples to “tell the story” is encouraged.
- Emphases will be on the process the group went through to complete the community service, not just the display.
- Display area will be provided. All Community Service entries will be displayed in one common area, not in the club’s area.
- Reserve space by contacting 4-H Office.

### EDUCATIONAL CLUB EXHIBIT

**AWARDS: Excellent - \$15.00; Good - \$10.00**

**Class Number:**

#### ▪ Club Display

- Consists of exhibits resulting from project work collectively from the membership of a club.
- Must include a group developed educational theme portraying to the public some aspect of a 4-H project to be eligible for premium.
- Display will be exhibited within the club’s booth area.

### GROUP ACTION BOOTH

**AWARDS: \$15.00 per group**

**Class Number:**

#### 3. Action Booth

- Exhibit consists of 1 or more (State Fair requirement is 3 or more) 4-H’ers with one adult.
- Must consist of no less than one hour (State Fair requirement is ½ day)
- Times should be scheduled prior to fair.
- Should be interactive with the fair going public and portray some aspect of 4-H project work

### POSTERS OR 3 – DIMENSIONAL DISPLAYS

**AWARDS: Excellent – 4 units, Good – 3 units of money**

#### 4. Poster or 3-Dimensional Display

- Must have been created for a Public Presentation
- Must include a statement describing how it was used in the presentation.

### RECORD KEEPING

**Classes 6 – 9: AWARDS: Excellent – 4 Units, Good – 3 Units of Money Only one entry per class.**

**Class Number:**

#### 5. Experience or Achievement Book:

- Record of project work in any project area and/or other evidence of 4-H Achievement.
- Premiums awarded on basis of material included: organization, neatness and arrangement, accomplishments in relation the number of years in 4-H club work
- Include news articles in which your name appears, pictures of you and your project, certificates, report of trips, demonstrations given, etc.
- Entry may contain other years work but only current year will be judged

#### 6. 4-H Club Secretary Book:

- The club’s secretary must have kept book for the current year.
- It must cover at least a 6-month period.
- It will be judged on neatness, completeness of record, accuracy, and general appearance.

#### 7. News Reporter’s Scrapbook:

- Only current year will be judged
- It will be judged on neatness, completeness of records, accuracy and general appearance.

#### 8. Project Record:

- Only one entry per member
- Record must be named and cover only this year’s project.
- It will be judged on neatness, completeness, accuracy and general appearance.

### 4-H JUNIOR SUPERINTENDENTS

**AWARDS: \$40.00 (sponsored by the Lewis County 4-H Fund)**

**Class Number:**

#### 10. Junior Superintendent

- Various responsibilities to include assistance with programs & activities in the Dairy, Horse and Small Animal Barns and the Youth Building.
- Individuals will help to display exhibits, assist judges, help fairgoers try 4-H activities, explain 4-H to the public, and much more.
- 4-H’ers wishing to participate are to be entering 6<sup>th</sup> grade
- An application must be completed, available from the 4-H office prior to fair (watch the 4-H News).
- Mandatory orientation will be provided at a date to be announced.

## SECTION 45 – FOOD AND NUTRITION

### FOOD AND NUTRITION

**AWARDS: Excellent – 4 units; Good - 3 units of Money**

**General Guidelines:**

- 4-H members must have completed at least one food project during their 4-H tenure.
- The exhibitor must have baked all baked entries from scratch.
- No refrigerated or frozen dough or box mixes are permitted.
- Use of bread machine is not allowed.
- No exhibits requiring refrigeration (cream or custard-based pies, cakes) are allowed.
- Our goal is to encourage the mastery of skills. Fewer ingredients generally means a simpler recipe. The more experienced 4-H member is encouraged to exhibit more difficult recipes.
- Please do your best to demonstrate good nutritional choices in your recipe.
- Remove all items from baking pans (except pies) and exhibit on paper plates or foil-wrapped cardboard.
- Exhibit must be covered with plastic re-sealable baggies – no plastic wrap.
- Do not bake muffins or cupcakes in paper liners.
- Include recipe card (product name, ingredients, preparation steps, yield) with all baked entries.
- Indicate how the recipe was modified to make it healthier.
- An exhibit is: 3 samples of small items (cookies, muffins, cupcakes, rolls, breadsticks, pretzels or similar products); ½ of large item (loaf bread, cake, coffee cake or similar products); or whole item if needed to convey appearance of product (pie, turtle-shaped bread or similar products).
- Only a visible sample must remain on display for fair week.

**Class Number:**

#### 1. Messages about Food and Fitness:

- Three dimensional exhibit
- Topics to be slanted toward nutrition
- The exhibit may be illustrated by use of actual foods (except those that may not hold up to fair conditions.
- If photos are used, they should be mounted on sturdy cardboard and large enough to be seen easily.
- Exhibit should be self-explanatory through use of appropriate signs or labels.
- Exhibit should be limited to card table size.
- Exhibit will be judged on the purpose or principal illustrating the topic, appearance and arrangement and accuracy of information.

#### 2. Drop or Hand Shaped

- Examples: drop-chocolate chip, applesauce, oatmeal; hand-shaped peanut butter, snicker doodles, crinkles. No frosting; hand-shaped cookies can be rolled in sugar.

#### 3. Pan Baked, Rolled or Refrigerator

- Examples: date bar, pumpkin bar, brownies or other batter cookie (not layered pan cookies). No frosting or added decorations that are not part of the batter.
- 4. Muffins**
- Plain, whole wheat, cornbread, bran, apple, or other. No toppings.
- 5. Biscuits or Scones:**
- Plain, whole grain, flavored, or other shaped (rolled & cut) biscuits or scones. No toppings.
- 6. Loaf Bread (not yeast leavened):**
- Banana, blueberry, apple, pumpkin, or other bread baked in a loaf pan.
- 7. Yeast Rolls:**
- Plain, whole grain, flavored, or other yeast rolls of any shape; does not include fancy rolls with fillings or frosting.
- 8. Yeast Bread:**
- Plain, whole grain, flavored, or other, baked in a loaf pan.
- 9. Shaped Bread**
- An exhibit is any small (such as pretzels or breadsticks), or large (such as animal shaped) hand shaped bread.
  - Plain, whole grain, flavored, or other; does not include fancy yeast breads with fillings or frosting.
- 10. Baking Light**
- An exhibit is sample of any baked product that is made with less fat and total calories by (1) modifying a recipe (include original and revised recipe); (2) using an already modified recipe; (3) making a traditionally low fat product such as angel food cake.
  - The recipe and explanation of why it is low in fat must be included.
  - Cookies, loaf bread, cake, cupcake, coffee cake, muffins, pies, or other baked items.
- 11. Grown in New York**
- An exhibit is a sample of any baked product that contains a fruit or vegetable grown in New York State.
  - Must include: (a) recipe, (b) explanation of ingredient grown in New York, including where it was grown and purchased and if it was preserved for later use.
  - Source of ingredient can be garden, U-pick or roadside stand, farmers market, or any market if source can be identified.
  - Cookies, muffins, bread, cake, cupcakes, coffee cake, pie or other baked items.
- 12. Heritage Foods**
- An exhibit is a sample of any baked item associated with family traditions or history
  - Must include: (a) recipe and (b) family history and traditions associated with the food.
  - Cookies, muffins, bread, cake, cupcakes, coffee cake, pie, or other baked items.
- 13. International Food**
- An exhibit is sample of any baked item associated with customs and traditions of a country or population of the world.
  - Must include: (a) recipe, (b) historical background or context, and (c) traditions associated with preparing, serving, and eating the food.
  - Cookies, muffins, bread, cake, cupcake, coffee cake, pie, or other baked items.
- 14. Healthy Recipe Collection**
- An exhibit is at least 6 recipes displayed in a box, notebook, or file folder.
  - May include photos or illustrations that provide needed nutrients while limiting fat and total calories.
  - For each recipe state: (1) relationship of key ingredients to Food Guide Pyramid; (2) nutritional benefit; (3) source of recipe; (4) how well it was liked; (5) any changes you would make in the recipe.
  - All recipes must be collected and made during the current enrollment year.
- 15. Heritage Recipe Collection**
- An exhibit is at least 10 recipes (displayed in box, notebook, or file folder; can include photos or illustrations) that depict family or local history.
  - For each recipe state: (1) source of recipe; (2) history related to recipe; (3) traditions related to preparing, serving, and eating the food.
  - For 4 of the 10 recipes, indicate how well it was liked after making it.
  - The collection should represent one or more generations older than you and can be collected from family, friends, or other community sources.

- All recipes must be collected and at least 4 of the 10 prepared during the current enrollment year.
- 16. Educational Poster & Exhibits – Individual or Group**
- An exhibit is a single poster (14" x 22", minimum size) or 3-dimensional display on any aspect of foods or nutrition.
  - Examples include messages that promote: Dietary Guidelines or Food Guide Pyramid; physical activity; food safety; reading labels and making ingredient choices; or other food and nutrition messages.
  - Entries will be evaluated on the basis of content, composition, and effectiveness.
- 17. Brown Bag Lunch**
- Exhibitor is to create a carry lunch
  - Foods are to be kept at proper temperature until judging.
  - Brown Bag may be decorated
  - A 3 X 5 card should accompany the entry with the following information: a)Name of exhibitor, b)Number of years in the 4-H foods project, c)Menu explaining what food groups are represented and their nutritional contribution.
  - Purpose or theme for the lunch (i.e. for school, work picnic, diet, etc.)
- 18. Preserved Foods** - Any processed food, including dried foods will be evaluated on appearance and process used. If there is a concern about food safety, the entry may not be tasted. Process must be described.
- Criteria for Exhibiting Home Canned Foods:
    - All canned foods must be processed in standard clear-glass canning jars with self sealing, two piece lids.
    - Jars must have a vacuum seal. Jars must be exhibited and judged without screw-bands.
    - Jars must be labeled with contents, type of processing (boiling water or pressure), time of process and altitude adjustment (time method of process should agree with USDA/PNW recommendations
    - Appropriated head space requirements must be followed: Fruit juices – ¼ inch; vegetables – ½ to 1 inch; jams and jellies – ¼ inch; pickles – ½ inch ; tomatoes – ½ inch
    - The following entries will be disqualified: a) foods processed and packaged not following current (1989 or later) USDA/PNW recommendations; b) Paraffin sealed jams and jellies; c) Jars with zinc lids; d) Foods – in green glass jars or non standardized jars; e) Foods that have been improperly processed or packed; f) Jars with more than 2" head space; g) Jars with added color, bleach, sulfite or other preservatives (for examples, baking soda may not be added to green vegetables and acids may not be added to non-pickled foods with the exception of tomatoes and figs).

## SECTION 46 – CLOTHING & TEXTILES

**AWARDS: Excellent – 4 units; Good 3 units of Money**

**Guidelines:**

Class 1-3 Require a statement include the following:

- Name or source of pattern
  - Fiber content of item when available
  - Care label information
  - If a kit is used for down or fiberfill items or outdoor equipment (i.e., parka, hood, booties, sleeping bag, tent) this must be stated.
  - Where did you get your ideas from (name a 4-H project)?
- No kits are allowed in Class 3.
  - Pieces of a coordinated outfit should be entered as one entry.
  - Projects selected for State Fair should be age and experience appropriate.
  - Class Number 1 – up to 10 different entries allowed; all other classes up to 3 different entries allowed in each class.

**Class Number:**

**1. Clothing, Sewn**

- Any simple, intermediate or advanced level sewn garment (state level on double entry card)
  - Level 1 – Beginning skill members
  - Level 2 – Intermediate skill members
  - Level 3 – Advanced skill members

**2. Wearable Accessories, Sewn**

- An item created by the exhibitor, which has a decorative and/or functional purpose.

**3. Historically Accurate Clothing, Sewn**

- Clothing made using materials and construction techniques appropriate for period clothing.
- Exhibit does not have to use the exact fabric or technique but there should be evidence of effort.

**4. Costumes, Sewn**

- Costumes made using materials and construction techniques appropriate for the costume design and use.
- For example if the costume is to be worn only once in a school play, the “look” of it from a distance will be more important than neat sewing.

**5. Recycled Garments, Sewn**

- Examples include remodeled or renovated garments.

**6. Textile Arts**

- Apparel or non-apparel items that use form of textile art other than sewing.
- Items may be crocheted, knitted, woven, tie-dyed, etc.

**7. Original Pattern Design**

- Wearable or non-wearable items, designed and constructed by exhibitor
- Designs may be made by hand, by computer or combinations/design alterations of purchased patterns.
- Include pattern and description.

**8. Non-Apparel, Sewn**

- Examples include outdoor equipment such as backpack, tent, sleeping bag; articles for a horse such as saddle pad, cooling sheet, saddlebags or recreational items such as kites and toys.
- For reference see the 4-H Curriculum *Simple Gifts* and *The Flight/Fabric Connection*.

**9. Purchased Garment**

- Entries in this class should reflect wise consumer decision-making.
- Garment or outfit must be accompanied by an 8 ½” x 11” information notebook.
- The notebook must include the following:
  - Color photo of entrant wearing garment or outfit – label photo with name, county
  - Color of complexion, hair and eyes
  - Cost of garment – include price tags or information, itemized comparison of cost to make garment – consider cost of fabric, notions, pattern, labor, etc.
  - Story that describes: a) why garment was purchased; b) how it fits into wardrobe; c) fabric structure, fiber content and care; d) simple accessories selected; and e) activities for which garment will be worn.
- For reference see the 4-H Curriculum *Clothing Decisions*.

**10. Poster Series or 3-Dimensional Exhibit**

- Poster must be at least 24” x 22”
- 3-Dimensional exhibit should be approximately card table size
- Can be on any aspect of clothing or textiles.
- Entries will be evaluated on the basis of content, composition and effectiveness.

**11. Sewing Box**

- Fabric Covered may or may not include sewing accessories (pin cushion, needle book, scissor guards (must be sewn by exhibitor))

**12. Model Mannequin**

- Must notify 4-H staff to schedule time
- Minimum of 15 minutes of modeling required for premium and ribbon

**13. Club Banners**

- Size: 2’ x 4’ minimum
- Designed to hang vertically or horizontally or to be carried horizontally

- Must be equipped with a dowel on top suitable for hanging or carrying
- Any assembly technique can be used
- Must incorporate the use of the 4-H Clover

**SECTION 47 – CHILD DEVELOPMENT/CARE**

**AWARDS: Excellent – 3 units; Good 2 units of Money**

**Class Number:**

**1. Creative Plaything**

- A homemade toy, book, game or activity to be used with children.
- Include age of child intended to use article and what the child will learn from article

**2. Poster**

- About safe baby-sitting/child care practices or about child development stages.

**3. “Baby Sitters Kit”**

- Including games, toys and safety materials needed while caring for a baby, toddler or preschooler.
- Include explanation of planned use of articles in kit.

**4. Picture Story**

- On a poster or in an album describe a phase of a child’s development (infant, toddler or preschooler phase).

**SECTION 48 – HOME ENVIRONMENT**

**AWARDS: Excellent 4 units; Good 3 units of money**

**Up to 3 different entries allowed per class**

**Classes 1 – 7 Statement required including the following:**

- What is the color scheme of the room?
- What will the item be used for?
- Where did you get your ideas from (name a 4-H project)?

**FURNITURE**

**Class Number:**

**1. Furniture with a painted/natural finish**

- Such as chair, table, chest, bookcase, etc.
- New unfinished, refinished or constructed by exhibitor.

**2. Chair or Stool with new seating**

- Frame may be new, unfinished, restored, refinished or re-upholstered by exhibitor.
- May have a painted or natural finish. Seat may be upholstered, caned, etc.

**3. Chair Seat**

- Items as in 2 except that only the seating will be evaluated.

**4. Wooden Accessory item with Painted or Natural Finish**

- Such as shelf, magazine rack, picture frame, wooden bowl, etc.
- Emphasis in this class is the restoration and not the actual construction of the exhibit.

**FABRIC FURNISHINGS**

**Class Number:**

**5. Major Furnishing items made of Fabric**

- Quilt, bedspread, coverlet, dust ruffle, curtains, draperies, slip covers, etc.

**6. Fabric Accessory**

- Such as a pillow, wall hanging, windsock, placemats, napkins, tablecloth, macramé and needle work including needlepoint, bargello, counted cross-stitch, latch hooking, crewel embroidery, candle wicking, knitting and crocheting, etc..

**7. A Group or Club Project**

- A quilt, wall hanging, etc.
- Club banners see communications and expressive arts)

**8. Embellished Furnishing**

- Items such as placemats and lampshades that have been changed by adding fabric, painted design or other embellishments.

**9. Home Storage**

- Laundry bags, shoe bags, locker caddies, travel storage, cardboard storage units, etc.

**10. Room Accessories**

- Bulletin board, fabric décor, lampshade, picture frame
- May not be sewn items

## POSTERS AND 3-DIMENSIONAL EXHIBITS

### Class Number:

#### 11. Posters(Poster must be at least 14" x 22")

- 3-Dimensional Exhibit should be limited to approximately card table size
- Should illustrate a topic in Home Environment.
- Exhibit should be self-explanatory through use of appropriate signs or labels.
- Exhibit will be evaluated on the purpose or principle idea, effectiveness in illustrating one idea, appearance, arrangement and description of the exhibit.

## SECTION 49 – ART AND CRAFTS

### Guidelines:

- Small, delicate, fragile items should be displayed in a display box.
- Objects whose ultimate use is to hang on the wall must have mountings on them and be ready for hanging.
- Other Craft entries can be made in the Home Environment Section 48
- **No Kits, Pre-forms, Patterns or Pre-cuts are permitted.**

**Class Number 1: AS FOLLOWS - Up to 4 different entries allowed in this class**

**AWARDS: Excellent 3 units; Good 2 units of Money**

- **Each article must have a securely attached statement with the following information:**
  - Exhibitors name
  - Name and type of article - see appropriate entry suggestions below
  - Skills, techniques or processes learned
  - Elements or principles of design item illustrates

### Drawings, Paintings, Graphics/Prints

*Art work is to be signed, matted and framed.*

- **Drawings:**
  - Expressive work in pencil, charcoal pencil, felt tip pen, stick charcoal, crayon, colored chalk or pastel, brush and ink.
- **Paintings:**
  - Expressive work in oil, watercolor, acrylics or mixed media, i.e., watercolor and ink, acrylic and chalk, acrylic and collage, etc.
- **Graphics/Prints:**
  - Any printing process that duplicates one or more identical images.
- **Sculpture:**
  - Materials may be wood, stone, clay, original cast plaster, paper-mache, metal (sheet or wire), fibers, fabric, or fiber glass, or a combination of these.
  - Processes may be carved, modeled, fired, soldered, glued, molded, laminated, nailed, or sewn.

### Crafts - NO KITS *An exhibit shall consist of one of the following:*

- **Ceramics, Pottery:**
  - Objects of clay, fired and/or glazed, hand built, wheel thrown, cast from original mold. No pre-forms permitted.
- **Hobby Ceramics:**
  - Any form cast from a commercial mold or pre-form.
- **Fiber, Fabric:**
  - Original design objects of 2 or 3 dimensions of fibers and/or fabrics used singly or in combination, employing any of the following techniques: weaving; knotting; needle arts; string art; sewing; etc.
- **Leather:**
  - Using no pattern
  - Objects can be tooled, carved, molded, stamped, laced, stitched and/or riveted and be combined with other materials.
- **Glasswork:**
  - Etched and stained glass.
- **Metal:**
  - Jewelry and objects of metal(s) used singly or in combination with other materials such as other metals, plastics, wood, ground stones, bone, enamel.
  - Objects can be made by the following processes: etched; engraved; tooled or molded.
- **Mosaics:**
  - Two- or three-dimensional objects using clay tile, glass, stone, natural and found materials.

### • Tie-Dying/Batik:

- **Process: tie-dyeing** - utilize knotting and folding techniques and 2 or more colors. Bleaching is acceptable.
- **Process: batik** - utilize the immersion or outline fill-in techniques of wax resist with 2 or more colors.
- No fabric paints or scribbles.

### • Wood and/or Paper

- Processes: carving; gluing; inlay; cutting; tearing; layering; (origami) folding.

### • Heritage Art, Crafts and Documentation *No Kits*

- Include the following: Source of traditional design (specific ethnic group or family); design plan/chart and historical background as appropriate.
- Emphasis in the heritage art, crafts and documentation is on personal growth and knowledge through learning about a cultural heritage. It is based on research of traditional designs, methods and materials as well as learning the necessary skills.

#### **Exhibit shall consist of one of the following:**

##### • Heritage Arts and Crafts:

- Traditional objects using materials, methods and/or decoration based on a continuation of ethnic art or handed down from one generation to another. Example, stencil created by exhibitor.

##### • Processed Natural Fibers:

- Natural fibers processed for use.

##### • Heritage Documentation

- Documentation of family or community history, buildings, methods of processing and/or use.
- Must cite references.

##### • Posters and Exhibits – Individual:

- A series of posters (at least 14" x 22") OR a three-dimensional exhibit illustrating a topic in Creative Arts & Crafts or Heritage and Horizon projects.
- Exhibit should be self-explanatory through use of appropriate signs or labels and should be limited to approximately card table size.
- Exhibit will be evaluated on content, illustrations, organization, clarity, visual appeal and readability.

##### • Posters and Exhibits – Group:

- A series of six to eight 8" x 10" mounted photos with theme and captions.
- OR ten to twelve colored slides including title and explanatory slides that show the sharing of an art/craft or heritage activity.

**Class Number 2: ARTS & CRAFTS OPEN - Up to 4 different entries allowed in this class**

**AWARDS: Excellent 3 units; Good 2 units of Money**

- Open Class: This class is an option for exhibits that fall outside the categories described above. Decision to have such exhibits selected for State Fair is left to the discretion of the 4-H Extension Educator. The exhibits must be deemed worthwhile by the County.

## SECTION 50 – VISUAL ARTS

**AWARDS: Excellent 4 units; Good 3 units of Money**

### Guidelines:

- Photographs must have been taken by the exhibitor as part of a 4-H program during the current year.
- One exhibit per class.
- Exhibits must be mounted on sturdy background.
- Do not submit exhibits in picture frames.
- Evaluated on technical quality, composition, story telling ability and preparation of exhibit.
- Exhibits must be titled.
- No photograph or digital image shall be smaller than 3 ½" x 3 ½".
- Exhibit shall be titled or captioned to assist the viewer to interpret the message.
- Preparation to demonstrate good workmanship and use of materials.

### PRINTS:

#### Class Number:

1. SINGLE PHOTO – BLACK AND WHITE

2. **SINGLE PHOTO - COLOR**
  3. **PHOTO STORY** – 4 to 8 prints of similar size
  4. **PHOTO STUDY CLASS** - Consist of one of the following:
    - 4 photos demonstrating 4 methods of isolating the subject - not more than 3 objects permitted in each photo.
    - 4 close-up photos with a different main light source in each - front, side, back and diffuse.
    - 4 photos - each to illustrate one idea, i.e., hidden lines and shapes, framing, patterns, perspective or texture. Show differences - same topic, different location, angles, etc.
  5. **1 TO 3 PHOTOGRAPHS DEVELOPED, PRINTED AND PROPERLY MOUNTED BY EXHIBITOR.**
  6. **DARK ROOM TECHNIQUE:**
    - Up to 4 enlargements
    - 8" x 10" maximum size.
    - Use film you processed and picture you printed.
    - Attach contact print of each negative.
    - Indicate control techniques used, if any, including spotting.
    - For color enlargements indicate process used — color printing paper or enlarging film.
  7. **SLIDES:**
    - Individual Color Slide:
      - Slide displayed in protective cover and labeled with name and address.
    - Slide Story:
      - 5 to 7 slides displayed in protective cover with written script.
  8. **VIDEO PROJECT**
    - Tapes must be at least seven minutes in length.
    - Tapes to feature a 4-H project or activity.
    - Judging criteria includes technical quality, organization and communication of message and creativity.
    - VHS 1/2-inch format.
  9. **DIGITAL IMAGE**
    - **Single Unedited Digital Image:**
      - Picture comes straight from the camera, no modification.
    - **Single Slightly Edited Digital Image**
      - Image somewhat digitally edited or enhanced.
      - Modifications may include: cropping; sharpening or blurring; brightness or contrast changes; or the addition of text.
      - Thumbnail of the original image shall accompany exhibit.
    - **Single Heavily Edited Digital Image**
      - Image has been radically digitally edited or enhanced.
      - Modifications may include: addition to or the removal of parts of the image; changes in the color scheme of the image; the use of filters or effects; or animation using digital images, etc.
      - Thumbnail of the original image shall accompany exhibit.
    - **Story Composed of 4 to 8 Digital Images of similar size**
      - If edited images are used, thumbnails of the originals shall accompany exhibit.
    - **Using Digital Images**
      - A short statement, story or article using one or more digital images to illustrate, visually explain or enhance its meaning.
  10. **COMPUTER GRAPHIC DESIGN**
    - Design a graphic to be used to promote 4-H in your county or in New York State.
    - Design must be:
      - Be black and white
      - Be copy friendly
      - Have been generated by a computer
      - Use the official 4-H clover (<http://www.4h-usa.org/4h/4h-name.h5m>)
      - Use of graphics from the world wide web is allowed
  11. **MY WEB PAGE**
    - Entry to include Web Page Address
    - Short write-up of what you would like to accomplish through your Web Page shall be included
    - Desirable, but not required, that your Web Page include the use of Chris Clover and at least one clover in support of the theme "4-H Still Takes You Places" (\*Using Microsoft compatible software)
- Web Page must be accessible either on a disk or on-line 9:00 a.m. – noon during the second and third days of your county exhibit time period.